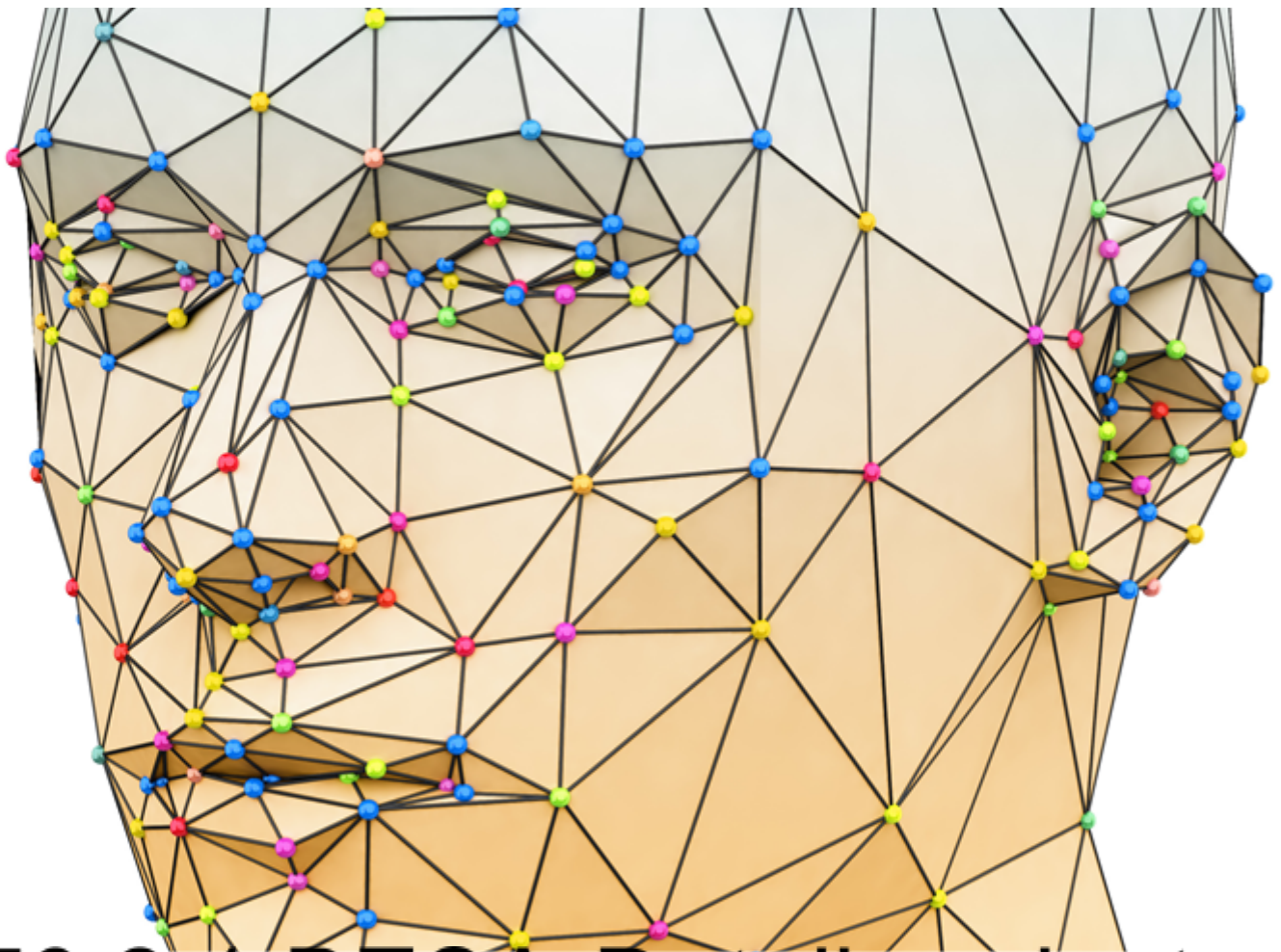




Internationaler Fachverband für BESA | ZVR Nr. 975047937
Hauptstraße 1, A 4861 Kammer-Schörfling am Attersee |
Österreich/Austria Tel.: +43/664/73152899 | E-Mail: info@ifvbesa.at

IFVBESA

Information is crucial



P76 2.1 BESA-Detail project

EMF in the electric vehicle - quantum entangled

Quantum Upgrade



Internationaler Fachverband für BESA | ZVR Nr. 975047937
Hauptstraße 1, A 4861 Kammer-Schörfing am Attersee |
Österreich/Austria Tel.: +43/664/73152899 | E-Mail: info@ifvbesa.at

Project P76 2.1 to BESA-expert opinion

Bioenergy informative system analysis within the framework
of the BESA-seal of approval about the effectiveness
of the "Quantum Upgrade" product
of the Quantum Upgrade, LLC
at EMF in the Luxury class electric vehicle, quantum entangled
also referred to as "test object" in the expert report.



Client

Quantum Upgrade, LLC
Attn: Eleonora Goldenberg
1421 LUISA STREET, STE G
SANTA FEE, NM 87505
USA

Project participants and responsible persons:

Project leader: Wolfgang Hans Albrecht, President and Scientific Director of IFVBESA
Assistant and test person: Eva Schmidt, vice president, and deputy scientific director of IFVBESA
Test subject: 3 anonymous test persons as well as 1 test person as Electric vehicle itself in the project P76.0

The detailed project P76 is divided as follows:

Detail project P76 1.0: Subject 1: in EMF (electromagnetic interference fields) quantum entangled in the electric vehicle. The proband is female (pensioner).
Detail project P76 1.1: Subject 2: with EMF (electromagnetic interference fields) in the electric vehicle. The proband is male (at the age of 37).
Detail project P76 2.0: Subject 3: at EMF (electromagnetic interference fields) live in the luxury class electric vehicle. The proband is female and aged 62 years.
Detail project P76 2.1: **Subject 4: Test person 4: this test person is a luxury class electric vehicle. The subject of the tests is the EMF (electromagnetic interference fields) of this car in itself.**

other participants: none

Project location: Location of the IFVBESA (field test according to detailed information) main street 1, A 4861 Kammer/Schörfling

Date: 02.03.2023 to 06.03.2023

Project duration: 5 days



Inhalt

BESA legend for interpretation of BESA measurement results	5
Basic of the research project creation P76 2.1	6
Research funding services of the IFVBESA	BESA- reference tests 8
Research project description	9
Test procedure	12
General information about the test result	27
Authorized summary	28

Important notes:

The client has the right to use this expert opinion. Irrespective of this, this expert opinion represents the intellectual property of IFVBESA as the contractor. The contractor is entitled to use this expert opinion for other purposes if this does not violate the client's data protection and confidentiality obligations. Apart from this, this expert opinion, with the exception of the "authorized abridged version", may not be changed or passed on in abridged form without the consent of the IFVBESA. The order for this project refers to bioenergetically measurable values and their interpretation according to the guidelines of BESA or the IFVBESA. The maintenance of the quality of the tested products as well as their regular control is the task and responsibility of the client. Investigation of the manufacture, mechanism of action, or interpretations of the Client's products to third parties is not the responsibility or task of the Contractor. Video recordings may only be made with the permission of IFVBESA.



BESA legend for interpretation of BESA measurement results

The measured value of 50 at the tested meridian represents an optimal energetic state in this organ or its higher levels. Also measured values in the range of 50 to max. 70 still count as a neutral and balanced energetic status. The organism is able to regulate irritations of the system (wrong environmental signals) very well.

Measured values above 70 to 100 represent the inflammatory range or a so-called energy surplus as a reaction to the irritations of the system by corresponding environmental signals. After reaching the maximum values, the energy state tips into the degenerative (blue) range.

Measured values from below 50 to around 0 represent the so-called degenerative measuring range or a lack of energy as a reaction to the stimulation of the system by corresponding environmental signals.

Measured values represented by a so-called pointer drop of more than 3 scale lines indicate total deregulation. The influence of certain environmental signals then leads to such strong system overloads, which can only be harmonized by corresponding new signals.

The orange measured values represent a resonance of the tested substances (electronic honeycomb contents) in the respective called bioenergy-informative control circuits as well as in its subordinate or superordinate structures.

BESA key figures:

up 0,79	very deep energetic regulation disorder (SSD) energy deficiency
0,8 to 1,19	strong energetic regulation disorder (SD) degeneration/lack of energy
1,2 to 1,59	energetic regulation disorder (D) degeneration/energy deficiency
1,6 to 1,99	degenerative transition (DÜ)
2,0 to 2,39	optimal regulation (OR)
2,4 to 2,79	in the regulation (R)
2,8 to 3,19	partial inflammation = regional energy excess (PE)
from 3,2	total inflammation = strong general energy surplus (TE)



Basic of the research project creation P76 2.1

The international association for bioenergetic system analysis was commissioned by the Quantum Upgrade, LLC to test or prove the effectiveness of the test object "Quantum Upgrade" in the presence of electromagnetic interference fields (EMF) in the luxury class electric vehicle (E-Car) towards test persons by means of bioenergy informative system analysis (BESA). The testing took place independently of the subjective perception of the test persons:

Description of the test objects, "Quantum Upgrade" by the client:

A "Quantum Upgrade", like the Leela Quantum Bloc, is a tool and technology that contains or provides a concentrated quantum energy space in the space between the golden plates. Therefore, it can also be called a quantum energy generator or quantum space generator. It is the first device on the market that cannot be made better by using other available tools, devices, or quantum energy generators. On the contrary, it can make any other device or product better because of its sophisticated energetic nature. The "Quantum Upgrade" is 6.5 times more powerful and faster in capacity than the Quantum Bloc.

What can the Quantum Upgrade do/what does it help with?

It is literally impossible to list all the areas that the "Quantum Upgrade" can support, optimize, and/or help with. Here we list a few topics, all of which have been proven through testing, testimonials, and third-party studies:

- charging any object with comprehensive, positive quantum energy.
- for clarification: energies are always neutral. By "positive", the client wants to refer to the positively affecting energy of the objects in the room, such as people, animals, plants, etc..
- harmonizing energy field for home, workplace, car, etc.
- harmonization of any negative frequencies
- helps to dive deeper into one's own consciousness (whether in meditation, in daily life, "retrieving" information, etc.)
- it can harmonize the energy in a house, a restaurant or a workspace
- it creates an energetic feng shui for any room in which it is placed
- it harmonizes and neutralizes EMF (3G, 4G, 5G, WiFi, microwaves, etc.)
- it neutralizes negative frequencies
- one can support all plants, seedlings or trees in the house and/or garden with the energy of the "Quantum Upgrade".
- and many more applications...



Polarity

There is no polarity in the "Quantum Upgrade". Magnets add pressure, instability, and a certain type of alignment to a quantum field, so the energy of a magnet-supported quantum field is a "trapped" and almost confined energy force that cannot flow freely and is constantly fighting with the magnetic field. Energetically, the field must constantly recharge itself. The instability, disharmony, and energetic pressure can be felt and "seen" in such devices, and they affect everything around them.

The "Quantum Upgrade" is a groundbreaking new quantum energy generator that provides not only a one-dimensional quantum field, but a truly multi-dimensional quantum space, and is also very powerful. It is also not bound in any way to the Earth's magnetic fields and can therefore be considered (and energetically looks like) a quantum sun, as it radiates and transmits freely in all directions without Earth-bound flux. The "Quantum Upgrade" is dynamic, harmonic, always stable, and retains these properties when quantum energy concentration and consciousness/perspective levels are increased. Although using a "Quantum Upgrade" comes with some responsibility, it should be known that the energy is always balanced and harmonious.

Animals also benefit from the "Quantum Upgrade"

Not only humans benefit from the positive effects of quantum energy. Animals can also sense the frequencies and use them very well for themselves, as long as they are tuned to their needs.

These indications should be an interpretation of the extent of the effect of the test object and an indication of its holistic, i.e. holistic, orientation. The effect of the Quantum Upgrade" can thus be well achieved for the animals.

Research funding services of the IFVBESA BESA- reference tests

Project P76 2.1 deals specifically with the proof of effect of the "Quantum Upgrade" in the presence of electromagnetic interference fields or electrosmog (EMF for short) of an electric vehicle of the absolute luxury class. In contrast to the detailed project P76 2.0, where the test subjects were tested live in the electric vehicle, these BESA tests were performed on the test subject represented by the said electric vehicle itself, quantum entangled. That is, the electric vehicle (subject) was placed in various energy informative states. Subsequently, the subject was photographed in its corresponding state. The photographs were subsequently quantum entangled and energy-informative BESA tested at the IFVBESA institute. The details of the respective BESA tests will be explicitly interpreted in the course of this project description.

What does quantum entanglement mean:



Quantum entanglement is a quantum mechanical phenomenon. Two or more entangled particles can no longer be described as individual particles with defined states, but only the total system as such.

That means, the photograph forms an indelible,- energy-informative image of the representation which is on the photograph (thus an energy-informative space). In other words, in relation to this project, it can be said that the energy information on the photographs represents a real extract from the quantum field and can be treated or tested according to this regularity. The photographs were tested in the laboratory of the IFVBESA via a surrogate BESA and evaluated according to the specifications of the IFVBESA.

That means, all following BESA tests of the project from the electric vehicle, which were recorded by means of photographs, took place afterward under the laboratory conditions of the IFVBESA already mentioned above.

What does surrogate mean:

This is a substitute person who stands in for the respective test person.

What are EMF: These include artificial electromagnetic radiation from, among other things, magnetic fields from electrical components in the e-car, 3G, 4G, and 5G technologies, WLAN and WLAN routers, Bluetooth, GPS, cordless phones, monitors, and various transmission masts or transmission towers that act on the test person from the outside. It is to be examined whether the "Quantum Upgrade" can neutralize the possible negative perception of the EMF on the test person (electric vehicle) or its disturbing effect on the energy-informative system of the test person.

The "Quantum Upgrade" was tested according to the request of the client within the framework of the applicable conditions of the IFVBESA for the award of quality seals. In principle, seals of approval are awarded in three categories depending on the significance of the test results, taking into account all the tests of a project.

For the "Quantum Upgrade" it should be determined whether by its application possible loads by EMF in the electric vehicle of the absolute luxury class and consequently in the energy system of the test person (biological system) existing disturbances, problems, blockades, disharmonies can be harmonized, neutralized and thus negative pathological conditions can be replaced by positive conditions. This was questioned in the following commissioned tests of this project.

General information transfer of the test object

The information transfer takes place from the hyperspace of the test object to the hyperspace of biological objects (humans, animals, plants). From there the information reaches the reference space or the energy space via so-called interaction channels. This is a union of, among other things, all organs and energy forms in the biological object. There, the information of the program can dynamically materialize and thus change current states. The



changes can appear in the form of neutralization or harmonization of disturbances, dissolution of problems, blockages, and disharmonies.

Research project description

The reason for the test was to prove the functionality of the "Quantum Upgrade" through test results obtained by confronting the subject with precisely selected situations and states in order to significantly prove and compare his reactions without the "Quantum Upgrade" and with the "Quantum Upgrade". The subject was contacted or associated with the respective energy informative states in BEFORE measurements and AFTER measurements.

- The BEFORE measurements were performed without the "Quantum Upgrade".

- The AFTER measurements were made with the "Quantum Upgrade".

The question for each AFTER measurement was: "Is the "Quantum Upgrade" suitable and able to harmonize or neutralize the possibly perceived stressful negative effects of the subject's energy-informative system?"

The correspondingly designed tests were to provide information about this by comparing the preliminary measurements without the "Quantum Upgrade" with the test results of the follow-up measurements carried out using the "Quantum Upgrade". The following situational positions were presented for this purpose:

Position 1: The luxury class electric vehicle, in this project directly designated as test person 4, was photographed with a neutral background and this photo was printed on a high-quality photographic paper in the institute of the IFVBESA. This means that the BESA tests were performed outside the electric vehicle, i.e. at the institute of IFVBESA via a so-called surrogate.

The aim of the BESA tests was to establish something like a baseline, a bioenergy informative status.

Position 2: The test object, the Quantum Upgrade was placed in the passenger cabin of the luxury class electric vehicle. As in position 1, the subject (electric vehicle) was photographed with a neutral background and this photograph was printed on a high-quality photographic paper. The BESA tests were performed outside the electric vehicle, i.e. again at the IFVBESA institute and via surrogate. The aim of the BESA tests was to determine the extent to which the test object, the Quantum Upgrade, is able to detect a change in the energy-informative state of the test person (luxury electric vehicle) or the photograph via its effect.

Position 3: The subject, the luxury class electric vehicle is photographed while it is connected to a fast charging station. This means the electric vehicle was charged with a charging current of about 500 A (amps) and about 200 - 78



kilowatts (fast charging), which corresponds to very high charging power and normally causes correspondingly high EMF. As in positions 1 and 2, the test subject (electric vehicle) was again photographed with a neutral background and this photo was printed on a high-quality photographic paper at the IFVBESA institute. Subsequently, a BESA test was performed on the photograph using surrogates.

Position 4: This situation occurred again at the IFVBESA institute. In this position of the fast charging process, the test person (electric vehicle) was brought into the test object, i.e. the Quantum Upgrade, as a photograph. This means that the test person was in the field of the Quantum Upgrade via the photograph for 5 minutes, as recommended by the manufacturer. After the 5 minutes had elapsed, the photograph of the test person (electric vehicle) was taken out of the field of the Quantum Upgrade again and tested by Ms. Eva Krankl. This means that the BESA testing took place after the 5 minute confrontation of the subject (on the photograph) with the test object. Thus, the BESA tests were again performed via a so-called surrogate.

The aim of the BESA tests was to determine the extent to which the test object is able to detect a change in the energy-informative state of the test subject (luxury electric vehicle) or the photograph via its effect after the 5-minute confrontation with the field of the Quantum Upgrade.

The concern of the development team was to determine whether the test object, the "Quantum Upgrade", as noted in the product description, is suitable for harmonizing or neutralizing the stresses or deregulations possibly resulting from EMF in the energy-informative system of the test person.

Conditions:

The BESA tests were conducted live and directly in the electric vehicle. This means that the BESA tests took place under the conditions specified by the IFVBESA for BESA field tests.

To the electric vehicle:

The electric vehicle is a luxury class electric vehicle year of construction 2023 with full equipment, 90 KWh battery power, incl. full equipment as well as Bluetooth, a navigation system, and various components operated by electric motors such as seat adjustment, Klimatronic, window lifter, and sunroof and energy recovery systems and many more. In addition, there was general permanent radiation exposure in road traffic (3G, 4G, 5G) due to corresponding transmission masts.

Pos. 1: BESA 1, testing BASIC (bioenergetic status) on the test person in the institute of IFVBESA.

Pos. 2: BESA 2, tests with the confrontation of the test person with the test object, the Quantum Upgrade.



Pos. 3: tests when the subject is confronted with EMF by the loading process.

Pos. 4: BESA 4, tests when the subject is confronted with EMF by the loading process and simultaneously confronted with the test object, the Quantum Upgrade.

Pos. 5: Evaluation of the results in the detailed project as well as a summary in a corresponding expert opinion according to the sample.

Procedure and specifications for the implementation:

1. **BESA- baseline measurement** of the subject at all previously determined measurement points (TING points) serve to determine the actual condition. The results were determined exactly according to the BESA specifications and documented via the known BESA graphs.

2. **the test person** was brought into contact with the situation to be tested depending on the project, whereby the sequence discussed with the client is considered as the specifications and is adhered to accordingly. In order to be able to determine the current energy state, all measurement points (TING points) were measured in the same order and for the same duration for each test of objects (as indicated in point 1). The results were again determined exactly according to the BESA specifications and documented via the known BESA graphs.

3. Activation of the test object

3.1 **When activating the "Quantum Upgrade"**, it was brought indirectly or directly into the measurement area, i.e. confronted with the test person, as specified by the client.

3.2 The test person was confronted with the situation to be tested according to the requirements. In this BESA test, the same measuring points (as mentioned above) and in the same order and time duration were measured (see item 1) to determine the current energy state. The results are documented exactly according to the known BESA specifications..

Test procedure

BESA 1 testing BASIC BEFORE as status:

In the first step, a basic bioenergy informative test (bioenergetic status) was performed on the meridian endpoints (TING points) of the subject.

BESA 2 testing AFTER confrontation of the test person with the "Quantum Upgrade"

In the further course of the BESA test, the subject was confronted with the Quantum Upgrade under the previously stated conditions.

The questions were: How does the meridian system of the subject react? How does the energy-information status of the test person change within the influence of the test object, the Quantum Upgrade? What differences arise in each case compared to the previous BESA 1 testing BEFORE?



**BESA 3 testing BEFORE; the subject in confrontation with an active fast-loading process.
In the further course of the BESA test, the subject was confronted with the conditions listed above.**

The questions were: How does the meridian system of the subject react? How does the energy-informative status of the test person change within the influence of the test conditions? What differences arise in each case compared to the previous BESA 1 testing BEFORE?

BESA 4 testing AFTER; the test person in confrontation with the active fast charging process and simultaneous application of the test object, the "Quantum Upgrade".

In the further course of the BESA test, the subject was additionally confronted with the Quantum Upgrade under the previously mentioned conditions.

The questions were again: How does the meridian system of the test person react? How does the energy-informative status of the test person change within the influence of the test object, the Quantum Upgrade? What differences arise in each case compared to the previous BESA 3 tests BEFORE?



BESA 1 Test BASIC BEFORE

BESA 1 Test BASIC BEFORE as status on the test person (electric vehicle)

Eva Schmidt carries out a BESA BASIC test by means of photography (test person as a representation of the luxury electric vehicle). All BESA tests are performed on the TING points (40 nail fold points on the fingers and toes).

Goal: To establish a baseline test (status) as a representation of the energy informative baseline situation for all further BESA tests on the test subject (electric vehicle).

BESA Test evaluation P76 2.1

from **03-03-2023 at 09:03 – 09:10** (7 minutes) page 15 and 16

Result: The measured values indicated a more or less degenerative situation at the organs or organ systems measured via the meridian endpoints (acupuncture points).

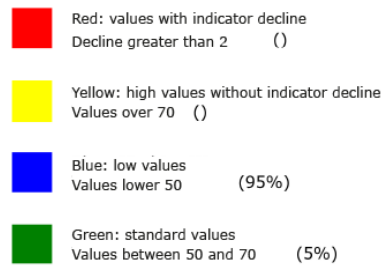
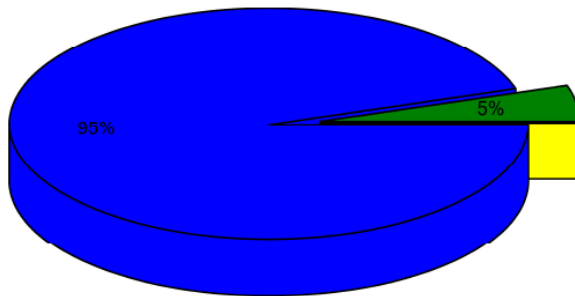
95 % in the blue area

05 % in the green area

Conclusion: As the BESA graphs and the pie chart show, 95% of the measurement results were in the blue, degenerative area. This corresponds, in terms of the organs tested in each case, to a general lack of energy. For understanding, we are talking here about an electric vehicle that was outside of an operating state.



Overview of BESA measuring





BESA basic test

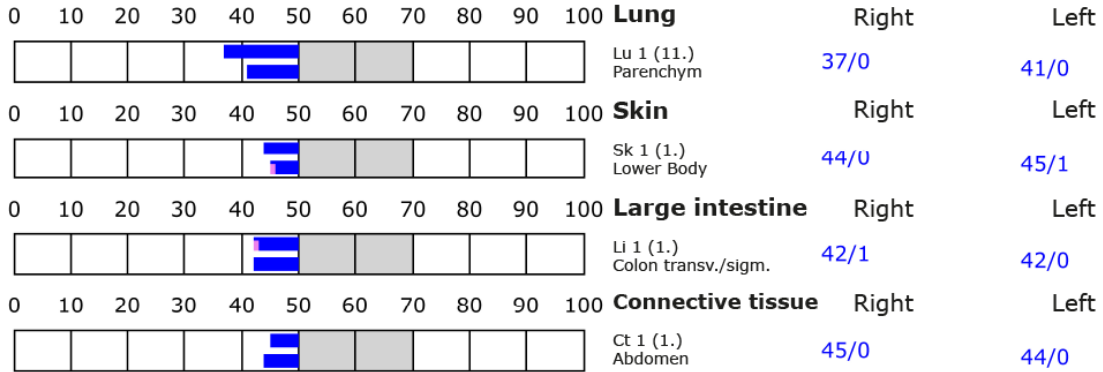
+++ : Indicator decline > 15 Skt.
 ++ : Indicator decline 6-15 Skt.
 + : Indicator decline 3-5 Skt.

T: Total inflammation (>89 Skt.)
 P: Partial inflammation (70-89 Skt.)

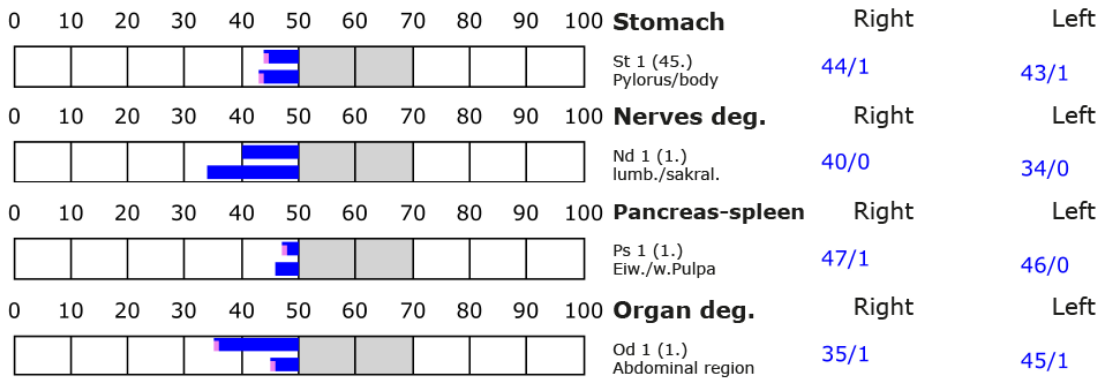
D: Degeneration (< 50 Skt.)

Standard values: (50-70 Skt.)

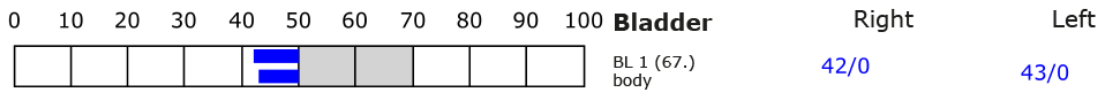
Element: lu - sk - li - ct



Element: st - nd - ps - od



Element: bl - ly - ki - al





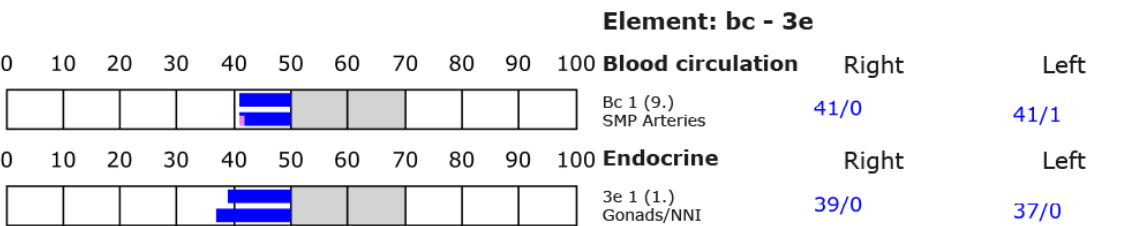
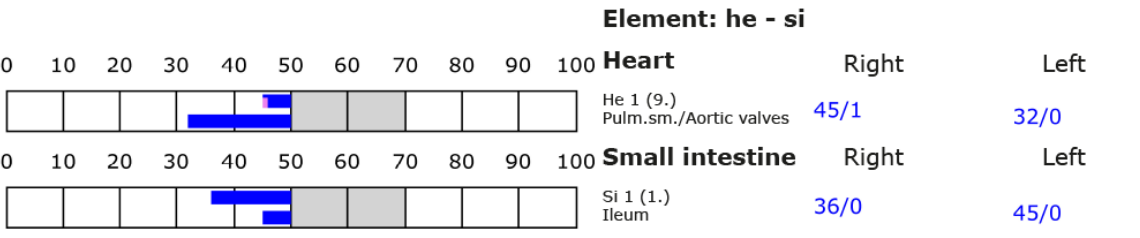
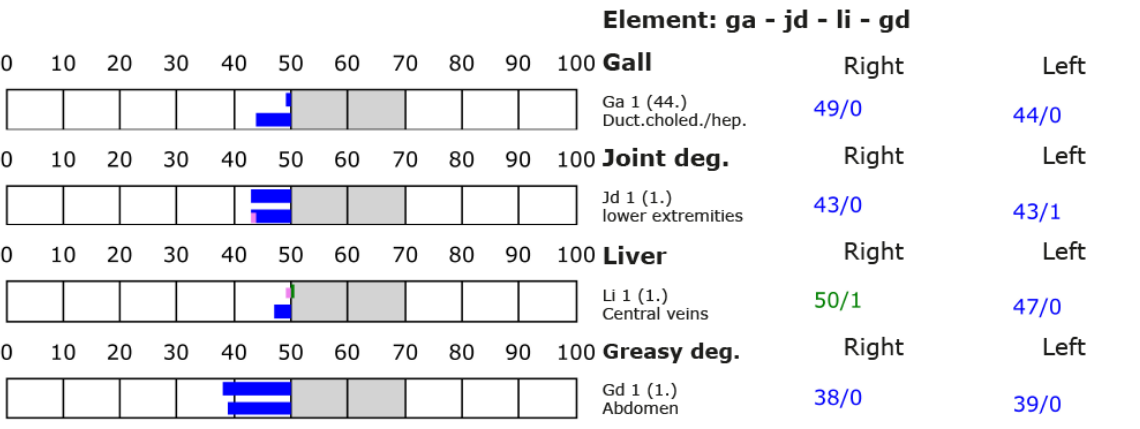
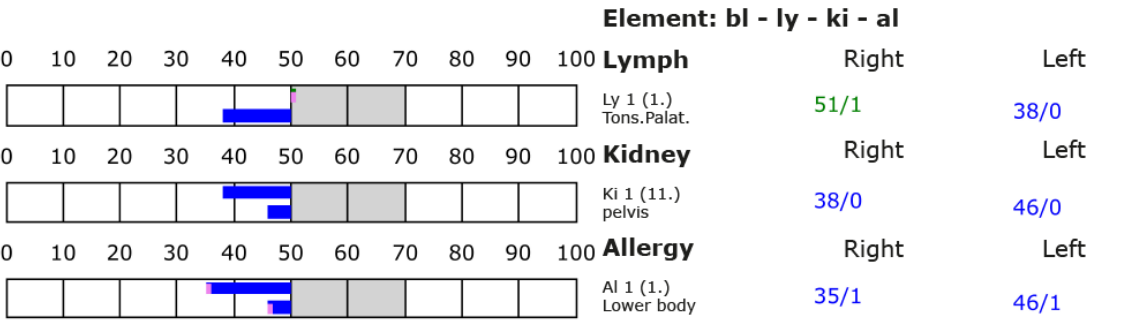
BESA basic test

+++ : Indicator decline > 15 Skt.
 ++ : Indicator decline 6-15 Skt.
 + : Indicator decline 3-5 Skt.

T: Total inflammation (>89 Skt.)
 P: Partial inflammation (70-89 Skt.)

D: Degeneration (< 50 Skt.)

Standard values: (50-70 Skt.)





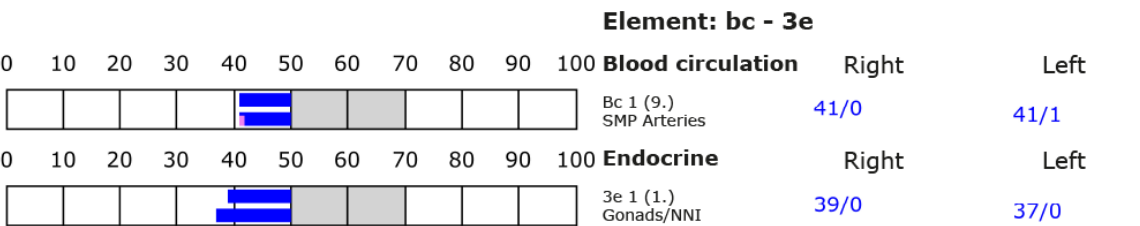
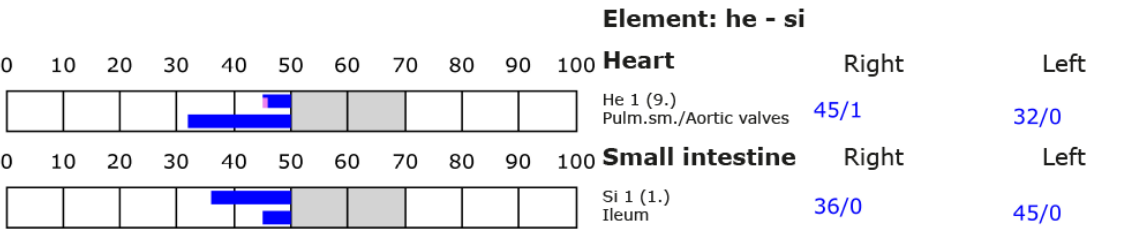
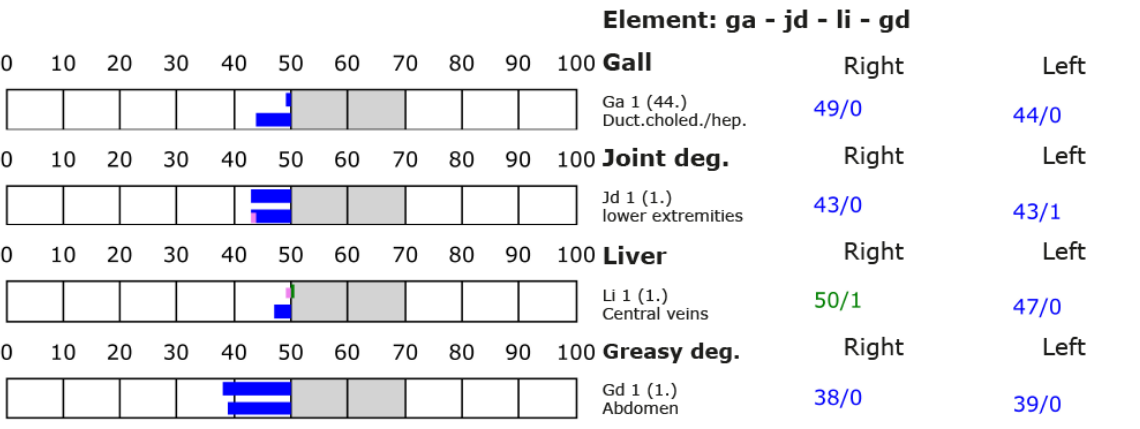
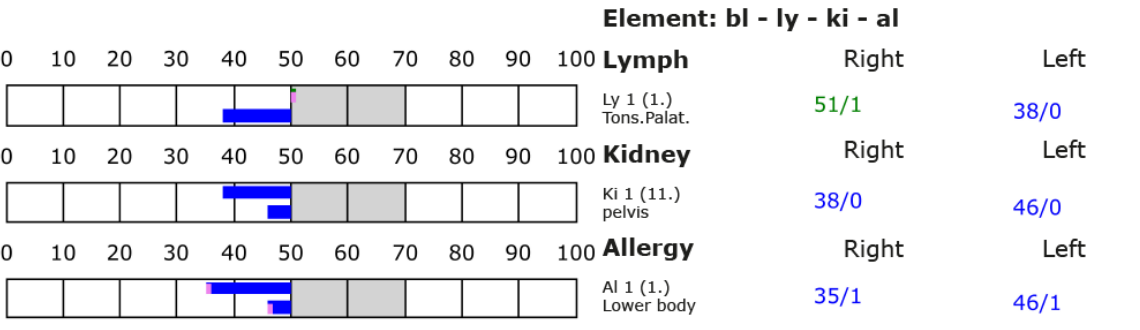
BESA basic test

+++ : Indicator decline > 15 Skt.
 ++ : Indicator decline 6-15 Skt.
 + : Indicator decline 3-5 Skt.

T: Total inflammation (>89 Skt.)
 P: Partial inflammation (70-89 Skt.)

D: Degeneration (< 50 Skt.)

Standard values: (50-70 Skt.)



BESA 2 Test AFTER



BESA 2 test AFTER on the test person (luxury electric vehicle on a photograph) with a simultaneous confrontation with the Quantum Upgrade.

In the further BESA on the test person (luxury electric vehicle on a photograph) with a simultaneous confrontation with the Quantum Upgrade during the process, the subject (luxury electric vehicle on a photograph) was confronted with the "Quantum Upgrade" by bringing the test object into the passenger compartment of the luxury electric vehicle and tested by Eva Schmidt. The test object, the Quantum Upgrade is located in the passenger compartment of the electric vehicle during the test. Thus, the test object is in direct confrontation with the test subject (luxury electric vehicle in a photograph) and thus in the measurement circuit.

Goal: To determine the reaction of the subject's energy-informative system when the "Quantum Upgrade" acts on the subject (electric vehicle). To determine the differences compared to BESA 1 testing BEFORE?

BESA Test evaluation P76 2.1

from 03-03-2023 at 09:12 – 09:17 (5 minutes) page 18 and 19

Result: The measurement result shows a significant improvement in the meridian endpoints or in the energetic state of the test person within a few minutes.

100 % in the green area

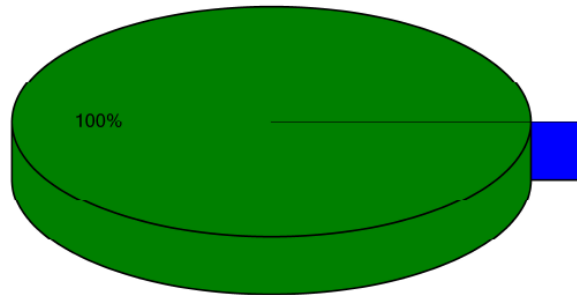
Conclusion: As the graphics show, after the test object, the "Quantum Upgrade" has been placed in the passenger compartment of the electric vehicle and thus in the measurement circuit of the test person, all measurement points are in the green, optimal and harmonized range (balanced energy system). BESA testing via photography (quantum entangled) results in a significant improvement of the energy situation in the subject's energy informative system compared to the previous BESA 1 testing. It is shown that the effect of the "Quantum Upgrade" is able to give the degenerative readings detected in the BESA 1 tests the necessary impulse for harmonization (neutralization) into the life-promoting range.

That is, the luxury electric vehicle exhibits a life-promoting field.

The comparisons of the BESA graphs confirm the constructive changes and the resolution of the stresses at the acupuncture points on the meridian system of the test person.



Overview of BESA measuring



- Red: values with indicator decline
Decline greater than 2 ()
- Yellow: high values without indicator decline
Values over 70 ()
- Blue: low values
Values lower 50 ()
- Green: standard values
Values between 50 and 70 (100%)

BESA basic test

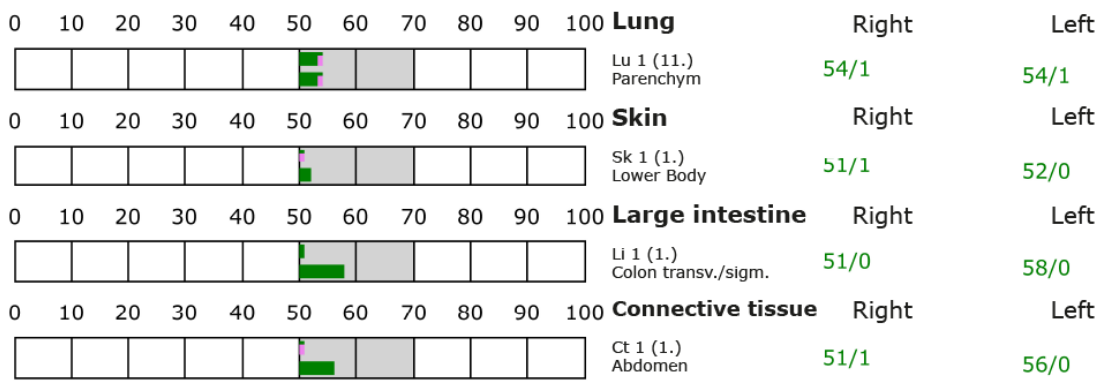
+++ : Indicator decline > 15 Skt.
 ++ : Indicator decline 6-15 Skt.
 + : Indicator decline 3-5 Skt.

T: Total inflammation (>89 Skt.)
 P: Partial inflammation (70-89 Skt.)

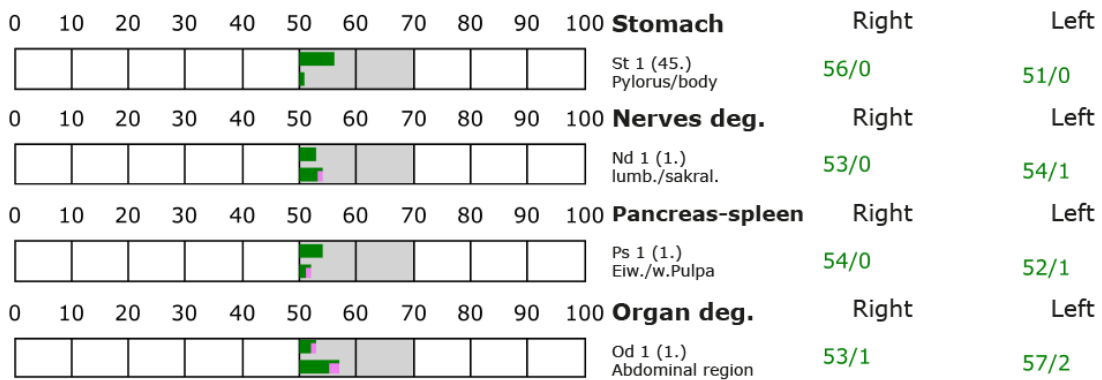
D: Degeneration (< 50 Skt.)

Standard values: (50-70 Skt.)

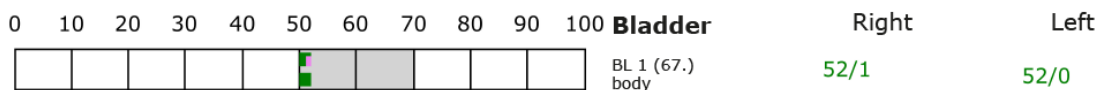
Element: lu - sk - li - ct



Element: st - nd - ps - od



Element: bl - ly - ki - al





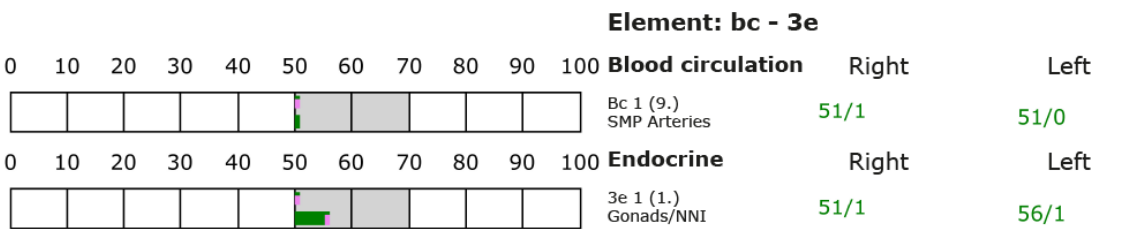
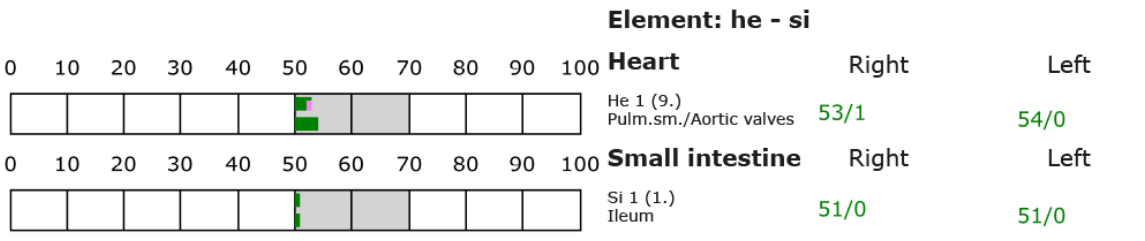
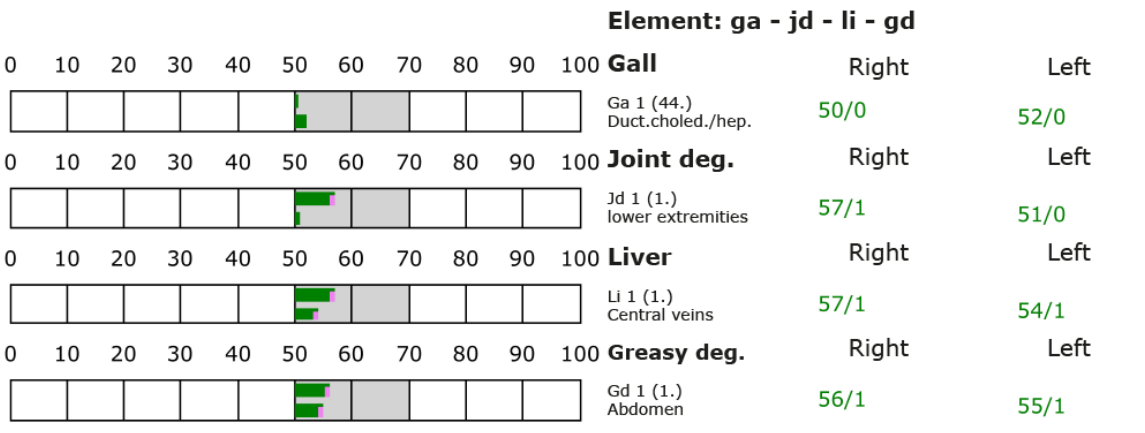
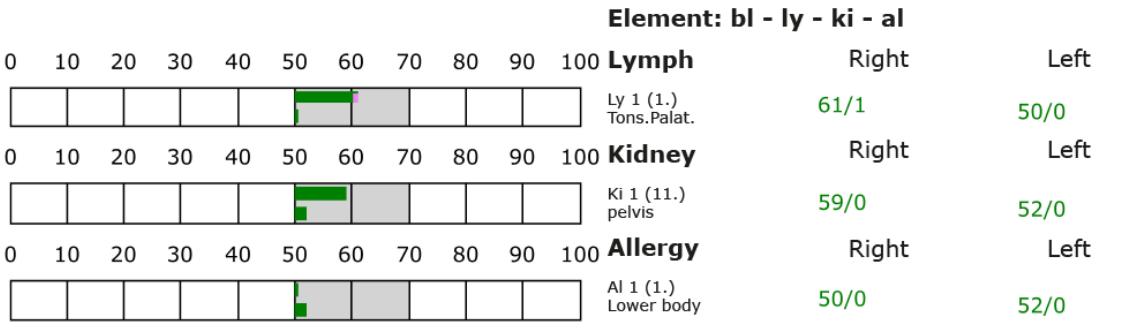
BESA basic test

+++ : Indicator decline > 15 Skt.
 ++ : Indicator decline 6-15 Skt.
 + : Indicator decline 3-5 Skt.

T: Total inflammation (>89 Skt.)
 P: Partial inflammation (70-89 Skt.)

D: Degeneration (< 50 Skt.)

Standard values: (50-70 Skt.)





BESA 3 Test BEFORE

BESA 3 test BEFORE; the test person (electric vehicle) is connected to a fast charging station during the test.

Eva Schmidt performs a BESA test via the photograph of the subject (luxury electric vehicle) showing the electric vehicle during a fast charge. All BESA tests were performed via surrogate at the TING points (40 nail fold points on the fingers and toes).

Goal: To determine the response of the subject's energy informative system (electric vehicle via photography at the fast- charging station) in confrontation with the strong EMF sources from the fast- charging process as a status and as a comparison to the BESA 1 BASIC tests.

BESA Test evaluation P76 2.1

from **03-03-2023 at 09:18 – 09:22** (4 minutes) page 21 and 22

Result: The values measured via the BESA tests indicated an enormous increase in stress at the energy informative system measured via the meridian end points (acupuncture points) compared to the measured values of the BESA 1 BASIC test. This subsequently allows stressful conclusions to be drawn about the current situation.

92% in the blue area

07 % in the red area

01 % in the yellow transition area

Conclusion: As the BESA graphs show, after a few minutes of fast loading time, all measuring points are now in the degenerative blue range (energy deficiency), 7% are even in the red range (total deregulation). Dramatically, however, the picture shows up due to the now many measured values in the red area. The red readings represent total deregulation of these energy areas. This means that the energy system of the test person, i.e. that of the electric vehicle, can have a stressful influence on them when used by humans or animals. The picture would be even more dramatic with permanent influences of such or similar disturbance fields. (see the comparison to the project P76 2.0/BESA 3 test after 30 minutes in the test vehicle) For a balancing of these red measured values or differently expressed:

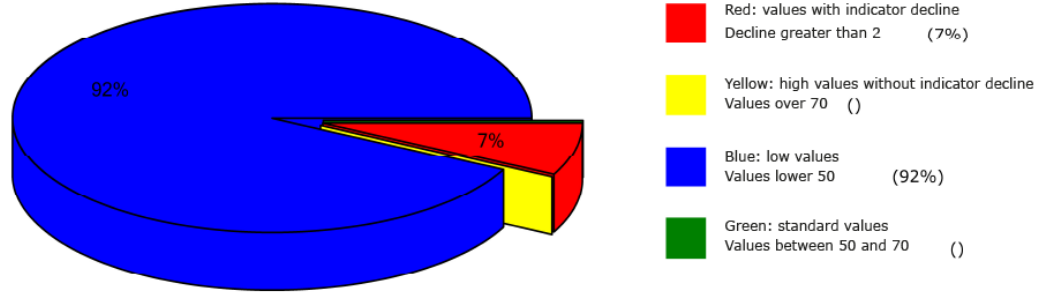
for a harmonization of the values, the energy system needs a strong positive energy informative impulse from outside. The comparisons of the BESA graphs confirm the stressful influences of the EMF on the test person.

This BESA test illustrates the dramatic difference between an electric vehicle being out of service condition and during a fast charge of a few minutes. The BESA readings index a dramatic increase in EMF on the electric vehicle.



The comparisons of the BESA graphs confirm the stressful influences of the EMF on the test subject.

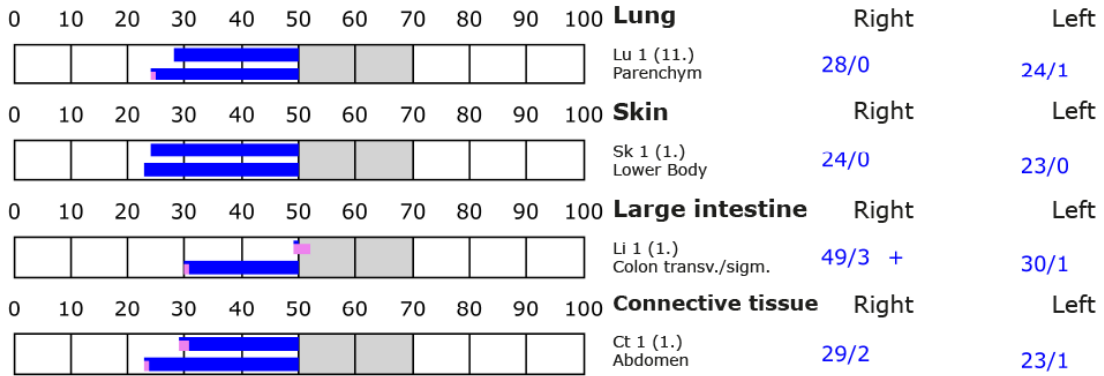
Overview of BESA measuring



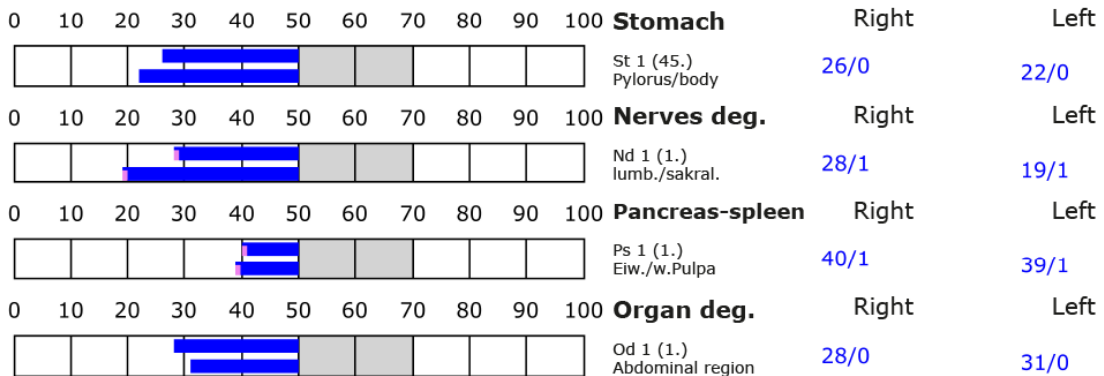
BESA basic test

++++: Indicator decline > 15 Skt. T: Total inflammation (>89 Skt.) D: Degeneration (< 50 Skt.) Standard values: (50-70 Skt.)
 ++: Indicator decline 6-15 Skt. P: Partial inflammation (70-89 Skt.)
 +: Indicator decline 3-5 Skt.

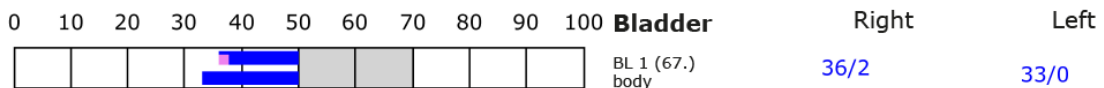
Element: lu - sk - li - ct



Element: st - nd - ps - od



Element: bl - ly - ki - al





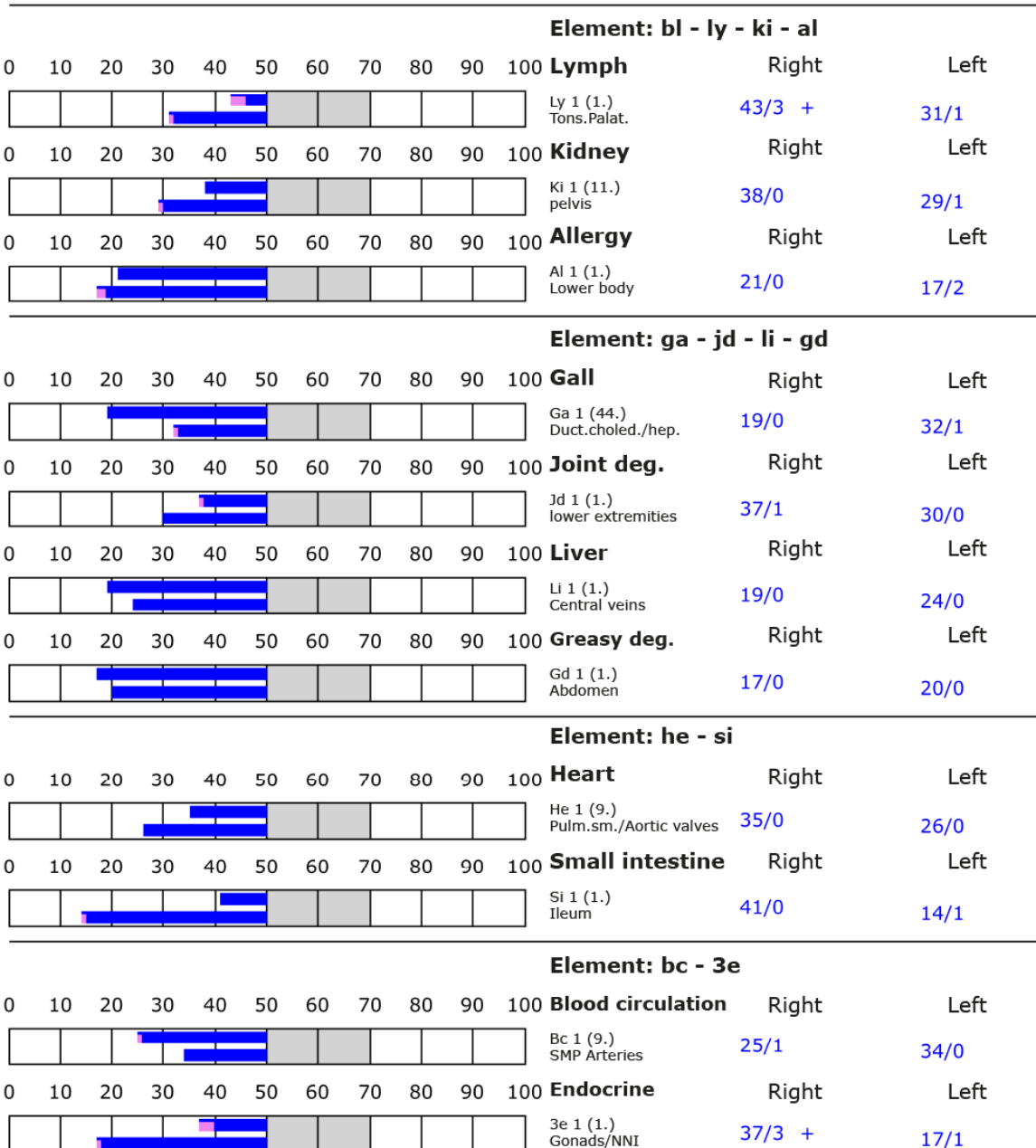
BESA basic test

+++ : Indicator decline > 15 Skt.
 ++ : Indicator decline 6-15 Skt.
 + : Indicator decline 3-5 Skt.

T: Total inflammation (>89 Skt.)
 P: Partial inflammation (70-89 Skt.)

D: Degeneration (< 50 Skt.)

Standard values: (50-70 Skt.)





BESA 4 Test AFTER

BESA 4 test AFTER; the test person (electric vehicle), which is connected to a fast charging station on the photograph, is confronted with the field of the Quantum Upgrade for 5 minutes.

The photograph of the subject (luxury electric vehicle) showing the image of the electric vehicle during fast charging is confronted for 5 minutes with the field of the test object, the Quantum Upgrade. Subsequently, Eva Schmidt performs a BESA test on the test subject (photograph of the electric vehicle during fast charging). All BESA tests were performed via surrogate on the TING points (40 nail fold points on the fingers and toes).

Goal: To determine the response of the subject's (electric vehicle) energy informative system within these strong EMF sources in the electric vehicle due to the fast-charge process. To determine the differences compared to the BESA 3 tests BEFORE.

BESA Test evaluation P76 2.1

from **03-03-2023 at 09:32 – 09:37** (5 minutes) page 24 and 25

Result: The measurement result shows a significant improvement at the meridian endpoints or at the energetic state of the test person within a few minutes.

100 % in the green area

Conclusion: As the graphs show, after confrontation of the photography with the test person (luxury class electric vehicle at the fast charging station) with the test object, the "Quantum Upgrade", all measurement points are in the green, optimal and harmonized range (balanced energy system).

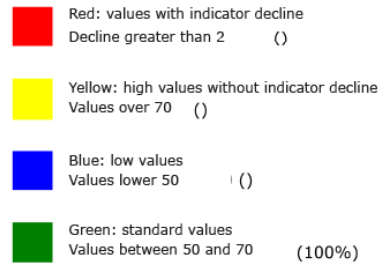
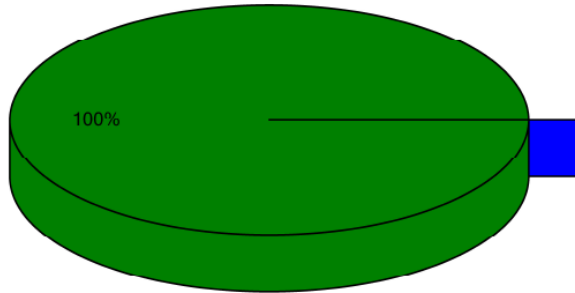
The BESA test on the photograph after confrontation of this (quantum entangled) with the test object', the Quantum Upgrade, results in a significant improvement of the energy situation in the energy informative system of the test person compared to the previous BESA 3 tests. It is shown that the effect of the 'Quantum Upgrade' is able to give the degenerative readings detected in the BESA 3 tests the necessary impulse for harmonization (neutralization) into the life-promoting range.

This means that the luxury electric vehicle exhibits a life-promoting field after confrontation with the field of the test object.

The comparisons of the BESA graphs confirm the constructive changes and the resolution of the stresses on the energy-informative system of the test subject.



Overview of BESA measuring





BESA basic test

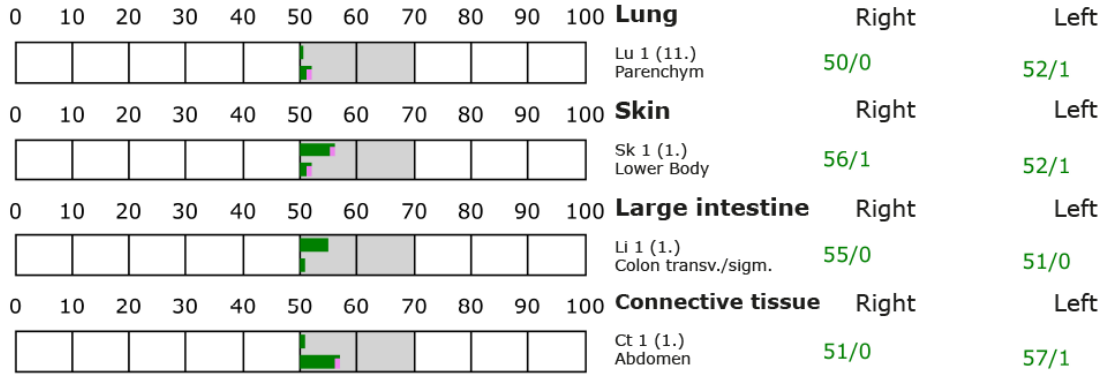
+++ : Indicator decline > 15 Skt.
 ++ : Indicator decline 6-15 Skt.
 + : Indicator decline 3-5 Skt.

T: Total inflammation (>89 Skt.)
 P: Partial inflammation (70-89 Skt.)

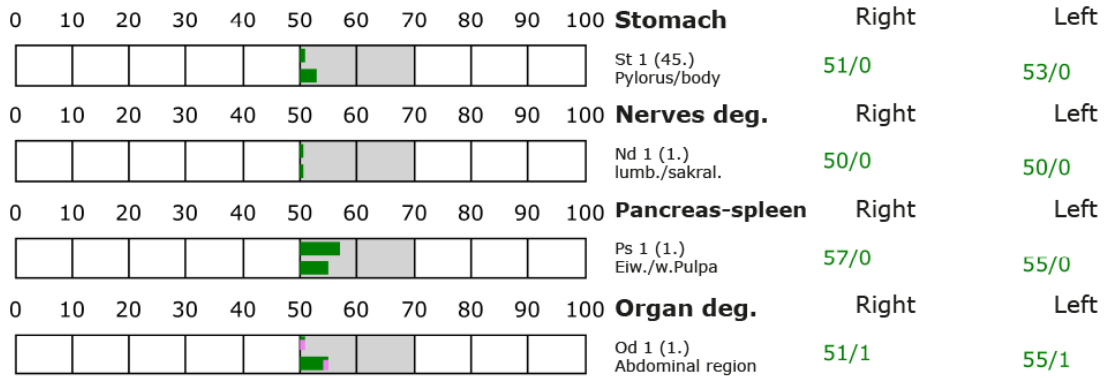
D: Degeneration (< 50 Skt.)

Standard values: (50-70 Skt.)

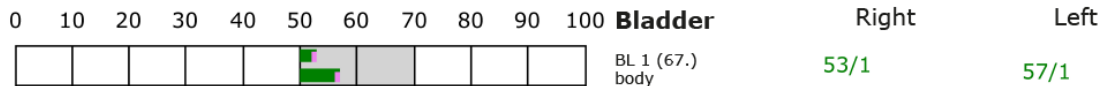
Element: lu - sk - li - ct



Element: st - nd - ps - od



Element: bl - ly - ki - al





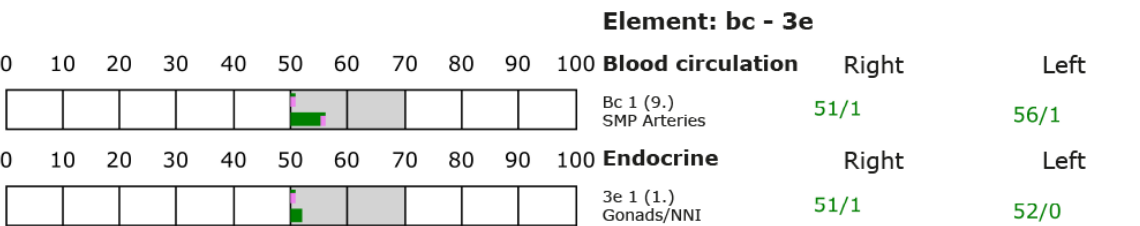
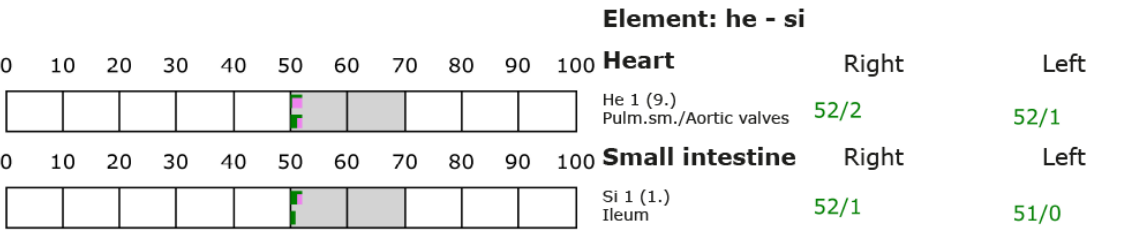
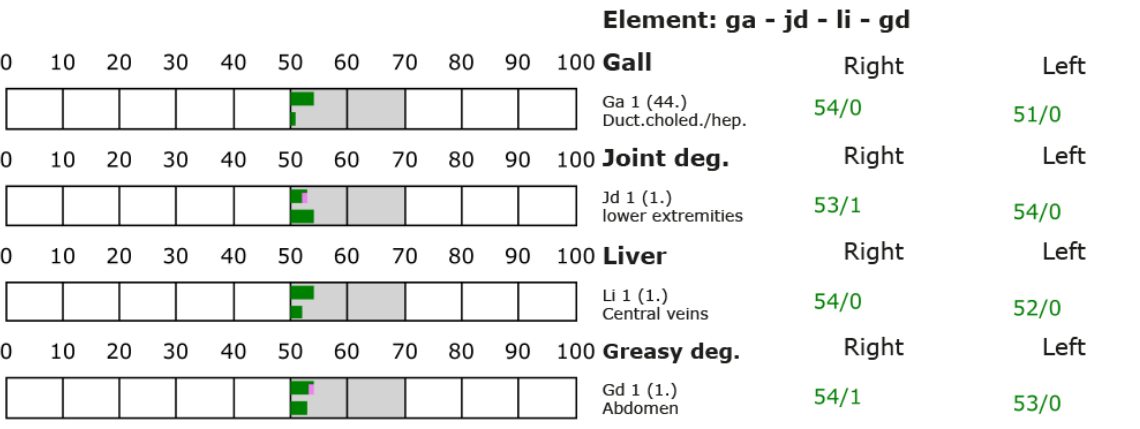
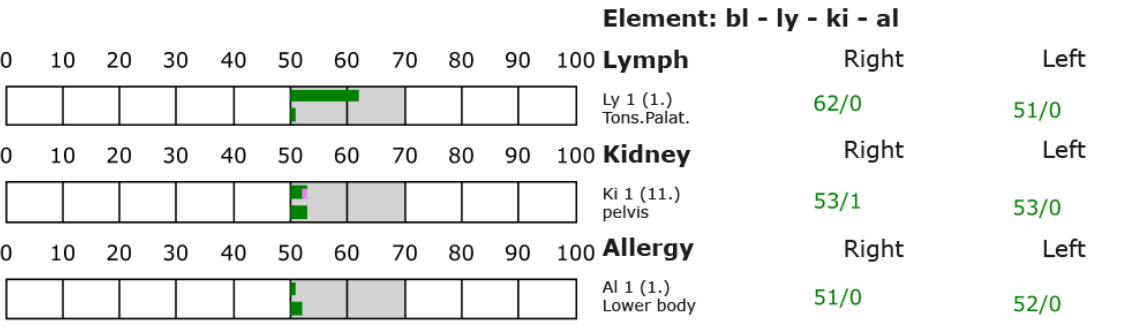
BESA basic test

+++ : Indicator decline > 15 Skt.
++ : Indicator decline 6-15 Skt.
+ : Indicator decline 3-5 Skt.

T: Total inflammation (>89 Skt.)
P: Partial inflammation (70-89 Skt.)

D: Degeneration (< 50 Skt.)

Standard values: (50-70 Skt.)

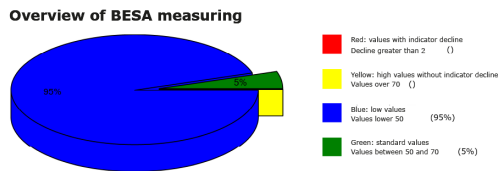


Comparison of all BESA tests BEFORE and AFTER

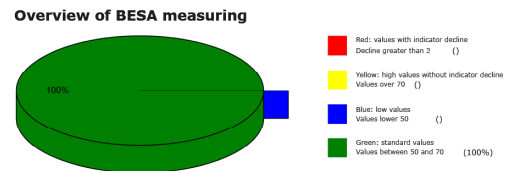
Proband 1



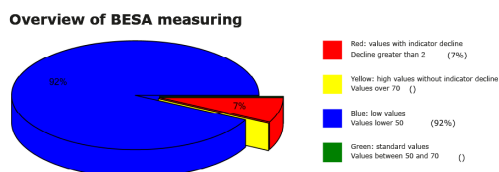
BESA 1 Basic testing BEFORE as status



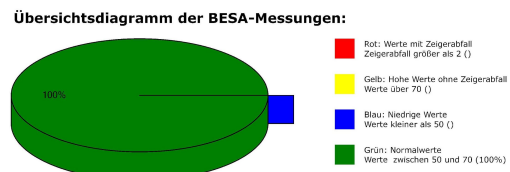
BESA 2 testing AFTER, after the confrontation of the test person with the test object (Quantum Upgrade)



BESA 3 testing BEFORE, Confrontation of the subject with a fast charging station



BESA 4 testing AFTER, after the confrontation of the test person with the test object (Quantum Upgrade)



The representation of the pie charts shows, on the one hand, the development of the loads on the test person with an increasing increase of the EMF in the electric vehicle and on the other hand how these could be harmonized by the test object, the Quantum Upgradek.

General information about the test result

Man represents a kind of receiving antenna for environmental information. This is because human life depends fundamentally and exclusively on environmental information. Our organism is biologically very sensitive to where natural information (fields) are located or where this natural information is subject to interactions and fluctuations. **For this reason, detected informative electromagnetic interference fields are biologically highly relevant. Any reduction or transformation of these interfering fields (ideally to 100 percent) is biologically very important, often even vital.** These informational disturbances from our environment are only compatible with life if they can be readjusted to a natural fluctuation tolerance. Disturbances, problems, blockades, and disharmonies in the biological control circuit of man find their causes in such disturbing electromagnetic information influences.

Neutralizing or harmonizing effects could be proven in this detailed project P76 2.1 to determine the effect of the "Quantum Upgrade". The "Quantum Upgrade" was able to



neutralize the biologically detrimental effects and effects of electromagnetic interference fields in the luxury class electric vehicle that were determined on the test person.

The significant ability of the "Quantum Upgrade" to neutralize and harmonize the electromagnetic interference fields or stress factors in the luxury class electric vehicle tested in this detailed project P76 2.1, as well as their transformation into biological life-promoting goodness, is proven with this project.

Authorized summary

The BESA tests carried out by IFVBESA on the energetic and physical effectiveness of the "Quantum Upgrade" have clearly shown that it is able to neutralize or harmonize biologically significant stress factors from EMF such as WLAN, Bluetooth, 3G, two connected smartphones of the 4G and 5G generations as well as transmission masts in the meridians or on the energy-informative system of the test person. Via the bioenergy-informative system analysis, the effect of the above-mentioned stress factors on the test person, his energy-informative systems, and their energetic-biological control circuits was questioned and systemically tested on the energy-informative level. The BESA tests BEFORE - AFTER show significant changes in the tested energy-informative system of the test person. The measured data as well as their key figures impressively confirm on the one hand the stresses that the tested fields have on the human organism, and on the other hand they clarify how after the application of the "Quantum Upgrade" the deregulating energies are transformed into body-immanent and biocompatible energies.

From a holistic point of view, it may be assumed that the positive effect on test subjects also occurs in humans and animals. That the positive influence of the "Quantum Upgrade" is actually possible with high precision is clearly shown by this test through the BESA BEFORE-AFTER comparisons. All measured values improved significantly from the mostly 100-percent blue or red measuring range into the green mostly 50-second range (scale value), i.e. the range of optimal measured values.

This means: an optimal regulation dynamic has taken place. Here, in the sense of the IFVBESA, one can clearly speak of an optimal, significant improvement of the body's own energy situation.

Result: The test persons, who were tested quantum entangled, were partly brought into contact with heavy EMF during the BESA-AFTER tests. In contrast to the BEFORE tests, in which the "Quantum Upgrade" was not used, positive measurement results were found throughout, indicating that neutralization or harmonization had taken place. The regulation dynamics developed into an optimal effective range.

By the proof of the energetic effectiveness of the "Quantum Upgrade" in this detail project P76 2.1 the conditions for the receipt of a BESA seal of approval in the area of EMF were confirmed by the international professional association for BESA.