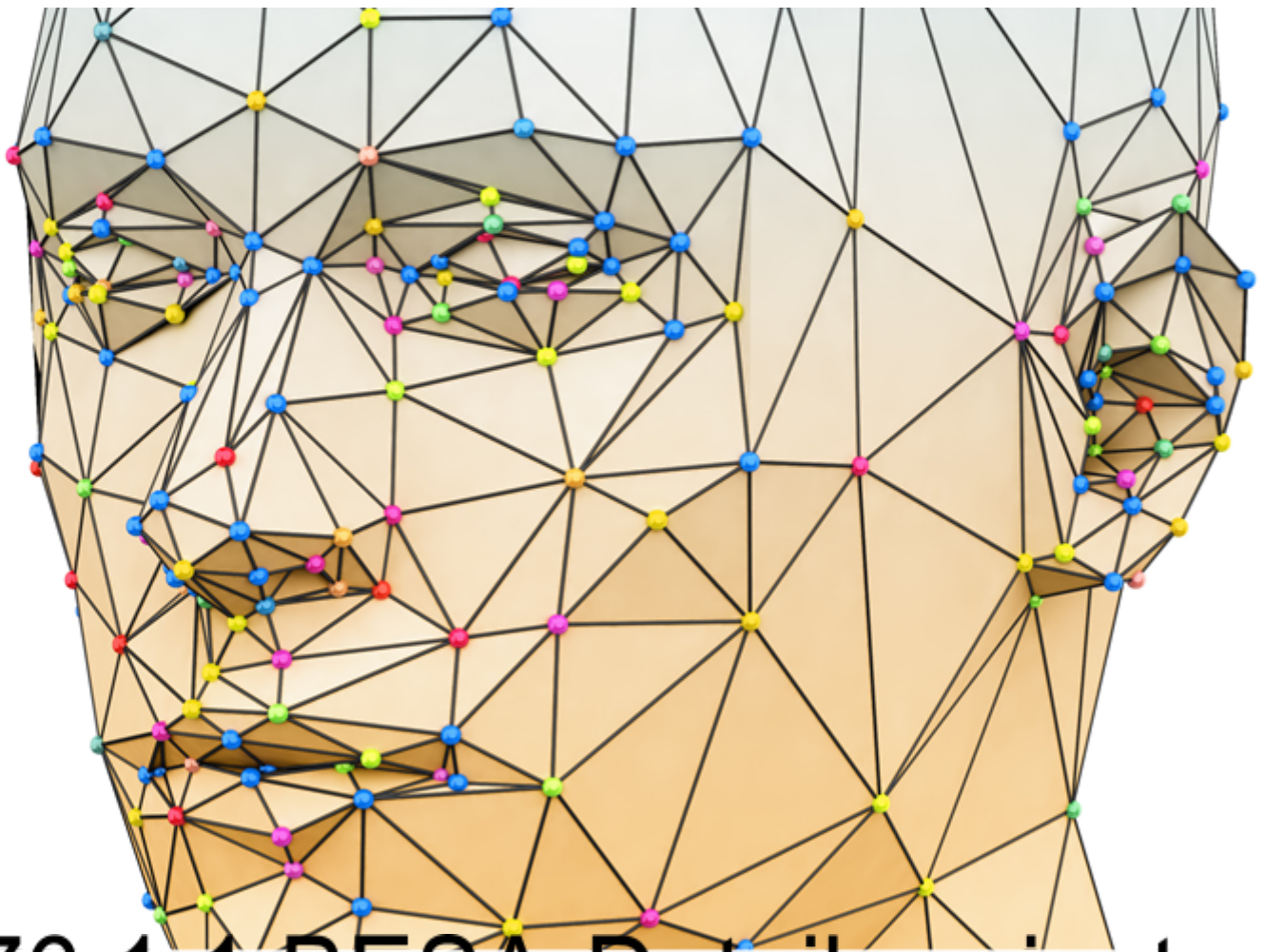




Internationaler Fachverband für BESA | ZVR Nr. 975047937
Hauptstraße 1, A 4861 Kammer-Schörfling am Attersee |
Österreich – Austria | Tel.: +43/664/73152899 | E-Mail: info@ifvbesa.at

IFVBESA

Information is crucial



P76 1.1 BESA-Detail project

Subject 2

EMF in the electric vehicle – quantum entangled

Quantum Upgrade



Internationaler Fachverband für BESA | ZVR Nr. 975047937
Hauptstraße 1, A 4861 Kammer-Schörfling am Attersee |
Österreich – Austria | Tel.: +43/664/73152899 | E-Mail: info@ifvbesa.at

Project P76 1.1 to BESA-expert opinion

Bioenergy informative system analysis within the framework
of the BESA seal of approval about the effectiveness
of the "Quantum Upgrade" product
of the Quantum Upgrade, LLC
at EMF in the electric vehicle, quantum entangled
also referred to as "test object" in the expert report



Client

Quantum Upgrade, LLC
Attn: Eleonora Goldenberg
1421 LUISA STREET, STE G
SANTA FE, NM 87505
USA

Project participants and responsible persons:

Project leader: Wolfgang Hans Albrecht, President, and Scientific Director of IFVBESA

Assistant and test person: Eva Schmidt, Vice President and Deputy Scientific Director of IFVBESA

Test person: 3 anonymous test persons as well as 1 test person as the electric vehicle itself in the project P76.0

The detailed project P76 is divided as follows:

Detail project P76 1.0: Subject 1: in EMF (electromagnetic interference fields) quantum entangled in the electric vehicle. The proband is female (pensioner).

Detail project P76 1.1: **Subject 2: with EMF (electromagnetic interference fields) in the electric vehicle. The proband is male (at the age of 37).**

Detail project P76 2.0: Subject 3: at EMF (electromagnetic interference fields), live in the electric vehicle. The proband is female and aged 62 years.

Detail project P76 2.1: Subject 4: Test person 4: this test person is a luxury class electric vehicle. The subject of the tests is the EMF (electromagnetic interference fields) of this car in itself.

Other participants: none

Project location: Location of the IFVBESA (field test according to detailed information) main street 1, A 4861 Kammer/Schörfling

Date: 21.02.2023 to 23.02.2023

Project duration: 3 days



Content

BESA legend for interpretation of BESA measurement results	5	
Basics of the research project creation P76 1.1	6	
Research funding services of the IFVBESA	BESA- reference tests	8
Research Project Description	9	
Test procedure	11	
General information about the test result	29	
Authorized Summary	29	

Important notes:

The client has the right to use this expert opinion. Irrespective of this, this expert opinion represents the intellectual property of IFVBESA as the contractor. The contractor is entitled to use this expert opinion for other purposes, if this does not violate the client's data protection and confidentiality obligations. Apart from this, this expert opinion, with the exception of the "authorized abridged version", may not be changed or passed on in abridged form without the consent of the IFVBESA. The order for this project refers to bioenergetically measurable values and their interpretation according to the guidelines of BESA or the IFVBESA. The maintenance of the quality of the tested products as well as their regular control is the task and responsibility of the client. Investigation of the manufacture, mechanism of action, or interpretations of the Client's products to third parties are not the responsibility or task of the Contractor. Video recordings may only be made with the permission of IFVBESA.



BESA legend for interpretation of BESA measurement

results

The measured value of 50 at the tested meridian represents an optimal energetic state in this organ or its higher levels. Also measured values in the range of 50 to max. 70 still count as a neutral and balanced energetic status. The organism is able to regulate irritations of the system (wrong environmental signals) very well.

Measured values above 70 to 100 represent the inflammatory range or a so-called energy surplus as a reaction to the irritations of the system by corresponding environmental signals. After reaching the maximum values, the energy state tips into the degenerative (blue) range.

Measured values from below 50 to around 0 represent the so-called degenerative measuring range or a lack of energy as a reaction to the stimulation of the system by corresponding environmental signals.

Measured values represented by a so-called pointer drop of more than 3 scale lines indicate total deregulation. The influence of certain environmental signals then leads to such strong system overloads, which can only be harmonized by corresponding new signals.

The orange measured values represent a resonance of the tested substances (electronic honeycomb contents) in the respective called bioenergy-informative control circuits as well as in its subordinate or superordinate structures.

BESA key figures:

up 0,79	very deep energetic regulation disorder (SSD) energy deficiency
0,8 to 1,19	strong energetic regulation disorder (SD) degeneration/lack of energy
1,2 to 1,59	energetic regulation disorder (D) degeneration/energy deficiency
1,6 to 1,99	degenerative transition (DÜ)
2,0 to 2,39	optimal regulation (OR)
2,4 to 2,79	in the regulation (R)
2,8 to 3,19	partial inflammation = regional energy excess (PE)
from 3,2	total inflammation = strong general energy surplus (TE)



Basics of the research project creation P76 1.1

The international association for bioenergetic system analysis was commissioned by the Quantum Upgrade, LLC to test or prove the effectiveness of the test object "Quantum Upgrade" in the presence of electromagnetic interference fields (EMF) in the electric vehicle (E-Car) towards test persons by means of bioenergy informative system analysis (BESA). The testing took place independently of the subjective perception of the test persons:

Description of the test objects, "Quantum Upgrade" by the client:

A "Quantum Upgrade", like the Leela Quantum Bloc, is a tool and technology that contains or provides a concentrated quantum energy space in the space between the golden plates. Therefore, it can also be called a quantum energy generator or quantum space generator. It is the first device on the market that cannot be made better by using other available tools, devices, or quantum energy generators. On the contrary, it can make any other device or product better because of its sophisticated energetic nature.

What can the Quantum Upgrade do/what does it help with?

It is literally impossible to list all the areas that the "Quantum Upgrade" can support, optimize, and/or help with. Here we list a few topics, all of which have been proven through testing, testimonials, and third-party studies:

- charging any object with comprehensive, positive quantum energy.
- for clarification: energies are always neutral. By "positive", the client wants to refer to the positively affecting energy of the objects in the room, such as people, animals, plants, etc..
- harmonizing energy field for home, workplace, car, etc.
- harmonization of any negative frequencies
- helps to dive deeper into one's own consciousness (whether in meditation, in daily life, "retrieving" information, etc.)
- it can harmonize the energy in a house, a restaurant or a workspace
- it creates an energetic feng shui for any room in which it is placed
- it harmonizes and neutralizes EMF (3G, 4G, 5G, WiFi, microwaves, etc.)
- it neutralizes negative frequencies
- one can support all plants, seedlings or trees in the house and/or garden with the energy of the "Quantum Upgrade".
- and many more applications...

Polarity



There is no polarity in the "Quantum Upgrade". Magnets add pressure, instability, and a certain type of alignment to a quantum field, so the energy of a magnet-supported quantum field is a "trapped" and almost confined energy force that cannot flow freely and is constantly fighting with the magnetic field. Energetically, the field must constantly recharge itself. The instability, disharmony, and energetic pressure can be felt and "seen" in such devices, and they affect everything around them.

The "Quantum Upgrade" is a groundbreaking new quantum energy generator that provides not only a one-dimensional quantum field, but a truly multi-dimensional quantum space, and is also very powerful. It is also not bound in any way to the Earth's magnetic fields and can therefore be considered (and energetically looks like) a quantum sun, as it radiates and transmits freely in all directions without Earth-bound flux. The "Quantum Upgrade" is dynamic, harmonic, always stable, and retains these properties when quantum energy concentration and consciousness/perspective levels are increased. Although using a "Quantum Upgrade" comes with some responsibility, it should be known that the energy is always balanced and harmonious.

Animals also benefit from the "Quantum Upgrade"

Not only humans benefit from the positive effects of quantum energy. Animals can also sense the frequencies and use them very well for themselves, as long as they are tuned to their needs.

These indications should be an interpretation of the extent of the effect of the test object and an indication of its holistic, i.e. holistic, orientation. The effect of the Quantum Upgrade" can thus be well achieved for the animals.

Research funding services of the IFVBESA

BESA- reference tests

The project P76 1.1 deals specifically with the proof of the effect of the "Quantum Upgrade" in the presence of electromagnetic interference fields or electrosmog (EMF for short) in the passenger compartment or the direct environment of an e-car of the upper middle class.

What are EMF:

These include artificial electromagnetic radiation from, among other things, magnetic fields from electrical components in the e-car, 3G, 4G, and 5G technologies, WLAN and WLAN routers, Bluetooth, GPS, cordless phones, monitors, and various transmission masts or towers that act on the test subjects in the passenger compartment from the outside. The aim is to test whether the "Quantum Upgrade" can neutralize the possible negative perception of the EMF in the e-car or their possibly perceived disturbing effect on the organism.



The "Quantum Upgrade" was tested according to the request of the client within the framework of the applicable conditions of the IFVBESA for the award of quality seals. In principle, seals of approval are awarded in three categories depending on the significance of the test results, taking into account all the tests of a project.

For the "Quantum Upgrade," it was to be determined whether through its application possible burdens from EMF and as a consequence existing disturbances, problems, blockades, and disharmonies in the energy system of the test person (biological system) can be harmonized, neutralized and thus negative pathological states can be replaced by positive states. This was questioned in the following commissioned tests of this project.

General information transmission of the test object

The information transfer takes place from the hyperspace of the test object to the hyperspace of biological objects (humans, animals, plants). From there the information reaches the reference space or the energy space via so-called interaction channels. This is a union of, among other things, all organs and energy forms in the biological object. There, the information of the program can dynamically materialize and thus change current states. The changes can appear in the form of neutralization or harmonization of disturbances, dissolution of problems, blockages, and disharmonies.

Research Project Description

The reason for the test was to prove the functionality of the "Quantum Upgrade" through test results obtained by confronting subjects with precisely selected EMF-carrying objects in the electric vehicle to significantly demonstrate and compare their responses without the "Quantum Upgrade" and with the "Quantum Upgrade". Subjects were contacted, i.e., associated, with precisely predetermined EMFs in BEFORE measurements and AFTER measurements in the electric vehicle.

- The BEFORE measurements were made without the "Quantum Upgrade"
- The AFTER measurements were made with the "Quantum Upgrade"

The question for each AFTER measurement was: "Is the "Quantum Upgrade" suitable and able to harmonize or neutralize the possibly perceived stressful negative effects of EMF in the electric vehicle on the organism?"

The correspondingly designed tests were to provide information about this by comparing the preliminary measurements without the "Quantum Upgrade" with the test results of the follow-up measurements carried out using the "Quantum Upgrade". For this purpose, the following situational positions were presented:

Position 1: The "Quantum Upgrade" was enforced on both subjects 1 and 2 outside the electric vehicle. (BESA-Basic)



Position 2: Both subjects 1 and 2 were driving in the electric vehicle. After 5 minutes, the “Quantum Upgrade” was used for both subjects 1 and 2 inside the electric vehicle (BESA-subject 1 and 2 driving in the electric vehicle)

Position 3: Both subjects 1 and 2 driving in an electric vehicle. After another 5 minutes, a photograph was taken of both subjects 1 and 2 in the electric vehicle while they were talking on the phone. (BESA-subject 1 and 2 driving in the electric vehicle and talking on the phone at the same time).

Position 4: Both subjects 1 and 2 are driving in the electric vehicle, the “Quantum Upgrade” is turned on. After 5 minutes, a measurement, photography, was taken of both subjects 1 and 2 in the electric vehicle. (BESA subjects 1 and 2 driving in the electric vehicle and Quantum Upgrade).

Position 5: Both subjects 1 and 2 are driving in the electric vehicle, the “Quantum Upgrade” is still turned on. After another 5 minutes, measurement, photography, was taken of both subjects 1 and 2 in the electric vehicle while they were talking on the phone. (BESA subjects 1 and 2 driving in the electric vehicle and talking on the phone at the same time and Quantum Upgrade).

The aim of the development team was to determine whether the test object, the "Quantum Upgrade", as noted in the product description, is suitable for harmonizing or neutralizing the stresses or deregulations in the meridian system of the test subjects that may result from EMF.

Conditions:

The BESA tests were performed quantum entangled over the corresponding photographs in the premises of IFVBESA under laboratory conditions, at room temperature 20°Celsius, on the natural wood floor.

What does quantum entangled mean: Quantum entanglement is a quantum mechanical phenomenon. Here, two or more entangled particles can no longer be described as individual particles with defined states, but only the overall system as such. This means that the photograph forms an indelible,- energy-informative image of the representation located in the photograph (i.e. an energy-informative space). The photographs were tested or evaluated in the laboratory of IFVBESA by means of a surrogate BESA.

That means, all following BESA tests of the project from the E-Car, which were recorded by means of photographs, took place afterward under the laboratory conditions of the IFVBESA already mentioned above.

What does surrogate mean: This is a substitute person who stands in for the respective test person.

The electric vehicle is an electric vehicle year of manufacture 2019 with full equipment, 35.8 kWh battery power, incl. Bluetooth, navigation system, and various components operated by electric motors such as seat adjustment, Klimatronic, window lifters, and sunroof. In



addition, there was general permanent radiation exposure in road traffic (3G, 4G, 5G) due to corresponding transmission masts.

- Pos.1:** BESA 1, tests BASIC (bioenergetic status) on test persons 1 and 2 in the laboratory
- Pos.2:** BESA 2, tests during the confrontation of test persons 1 and 2 with EMF by the electric vehicle in driving operation.
- Pos.3:** BESA 3, tests when subjects 1 and 2 are confronted with EMF by the electric vehicle being in driving mode while subjects 1 and 2 are talking on the phone at the same time.
- Pos.4:** BESA 4, tests with the confrontation of test persons 1 and 2 with EMF by the electric vehicle in driving mode and simultaneous application of the test object, the Quantum Upgrade.
- Pos.5:** BESA 5, tests when subjects 1 and 2 are confronted with EMF by the electric vehicle in operation while subjects 1 and 2 are simultaneously on the phone and using the test object, the Quantum Upgrade, at same time.
- Pos.6:** Evaluation of the results in the detailed project as well as a summary in a corresponding expert opinion according to the sample

Procedure and specifications for implementation:

1. **BESA baseline measurement** of the subjects at all previously determined measurement points (TING points) serve to determine the actual condition. The results were determined exactly according to the BESA specifications and documented via the known BESA graphs.
2. **Test subjects 1 and 2** were brought into contact with the **EMF-carrying objects from the electric vehicle** depending on the project, whereby the sequence discussed with the client is considered as specifications and is adhered to accordingly. In order to be able to determine the current energy state, all measurement points (TING points) were measured in the same order and for the same duration for each test of objects with EMF (electromagnetic interference fields) (as indicated in item 1). The results were again determined exactly according to the BESA specifications and documented via the known BESA graphs.
3. **Aktivierung** Activation of the test object

- 3.1 When activating the "Quantum Upgrade", it was indirectly brought into the measurement area according to the client's instructions, i.e. confronted with subjects 1 and 2.

The subjects were contacted by the EMF carrying objects. In this BESA test, the same measuring points (as mentioned above) and in the same order and time duration were measured (see point 1) to determine the current energy state. The results are documented exactly according to the known BESA specifications.



Test procedure

BESA 1 testing BASIC BEFORE as status:

In the first step, basic bioenergetic testing (bioenergetic status) was performed on the meridian endpoints (TING points) of the subjects.

BESA 2 Test BASIC BEFORE with EMF-carrying objects in the moving electric vehicle

In the further BESA test procedure, the EMF-carrying objects (e.g. magnetic fields of the electrical components as well as EMF from WLAN, smartphone, Bluetooth) in the electric vehicle were tested on the respective subjects. The questions were: How does the meridian system of the test subjects react? How does the energetic status change when confronted with the EMF? What are the differences in each case compared to the previous BESA BASIC testing BEFORE?

BESA 3 testing BEFORE with EMF-carrying objects in the moving electric vehicle including simultaneous telephone calls

In the further course of the BESA test, in addition to the conditions listed above, 2 smartphones were activated or phone calls were made with them while driving in order to record the reaction of these additional EMF on the meridian system of the subjects. The questions were again: How does the meridian system of the test persons react? How does the energetic status of the subjects change when confronted with the EMF? What differences arise in each case compared to the previous BESA 2 testing BEFORE?

BESA 4 testing AFTER with the "Quantum Upgrade" in combination with EMF leading objects in the moving electric vehicle.

In the further BESA testing process, the Quantum Upgrade was added to the conditions listed above from BESA 3 testing.

The questions were again: How does the meridian system of the test persons react? How does the energy-informative status of the test subjects change within the moving electric vehicle when the test subjects are simultaneously confronted with the test object? What differences arise in each case compared to the previous BESA 2 and 3 testing BEFORE?

BESA 5 testing AFTER with the "Quantum Upgrade" in combination with EMF leading objects inside the driving electric vehicle and simultaneous phone calls.

In the further BESA testing process, in addition to the conditions listed above from BESA 4 testing, 2 phone calls were made and the Quantum Upgrade was added.

The questions were again: How does the meridian system of the test persons react? How does the energy-informative status of the test persons change inside the moving electric vehicle when both test persons are on the phone at the same time and when the test persons are confronted with the test object at the same time? What differences arise in each case compared to the previous BESA 2, 3, and 4 testing BEFORE?



Proband 2

BESA 1 Test BASIC BEFORE

BESA 1 test BASIC BEFORE as a Status on Proband 2

Eva Schmidt performs BESA basic testing outside the electric vehicle on subject 2. All BESA tests are performed at the TING points (40 nail fold points on the fingers and toes).

Goal: To establish a baseline test (status) as a representation of the energy informative baseline situation for all further BESA tests.

BESA test evaluation P76 1.1
from **21-02-2023 at 11:55 - 11:59** (4 minutes) pages 14 and 15

Result: The measured values indicated a strongly degenerative overall condition, from an energy-information point of view, in the organs or organ systems measured via the meridian endpoints (acupuncture points).

95 % in the blue area

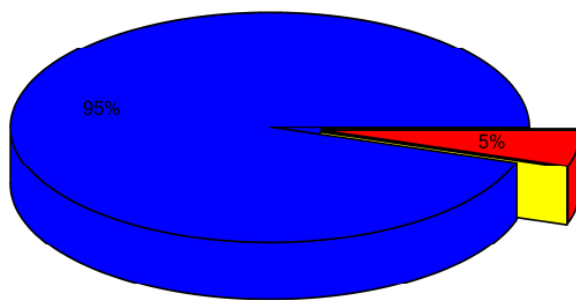
05 % in the red area

Conclusion: As the BESA graphs show, all measurement points in this subject are already in a deep degenerative range in the BESA 1 Basic test, blue measurement values (severe energy deficiency). However, the picture becomes dramatic due to the now many measured values in the red area. The red readings represent the total deregulation of these energy areas. This means that the energy system of the organism is already heavily burdened in the basic test. This subject is inherently under certain stressful influences. For balancing of these red measured values or in other words:

For a harmonization of the values the energy system needs a strong positive energy-informative impulse from outside.



Overview of BESA measuring



- Red: values with indicator decline
Decline greater than 2 (5%)
- Yellow: high values without indicator decline
Values over 70 ()
- Blue: low values
Values lower 50 (95%)
- Green: standard values
Values between 50 and 70 ()



BESA basic test

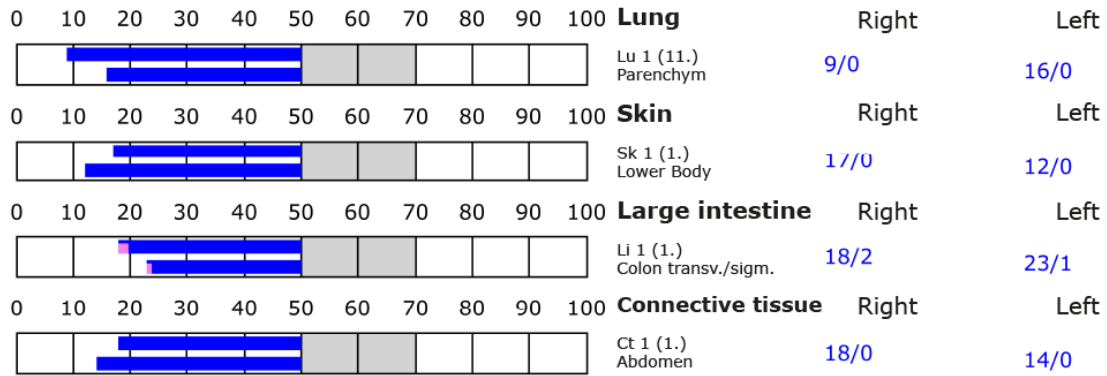
+++ : Indicator decline > 15 Skt.
 ++ : Indicator decline 6-15 Skt.
 + : Indicator decline 3-5 Skt.

T: Total inflammation (>89 Skt.)
 P: Partial inflammation (70-89 Skt.)

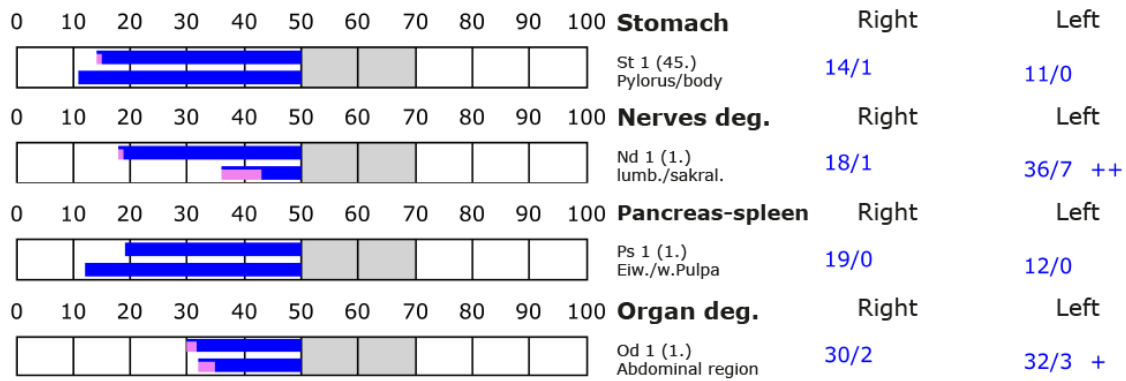
D: Degeneration (< 50 Skt.)

Standard values: (50-70 Skt.)

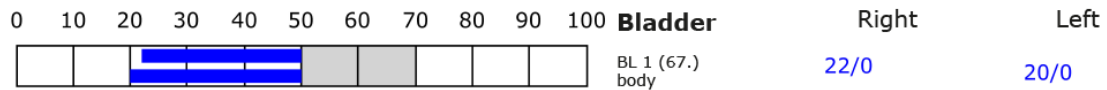
Element: lu - sk - li - ct



Element: st - nd - ps - od



Element: bl - ly - ki - al



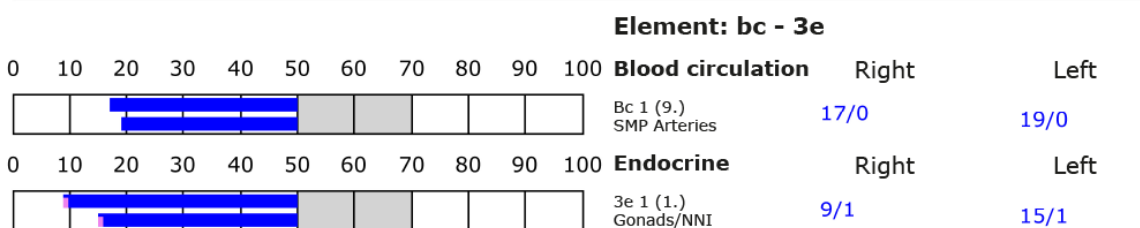
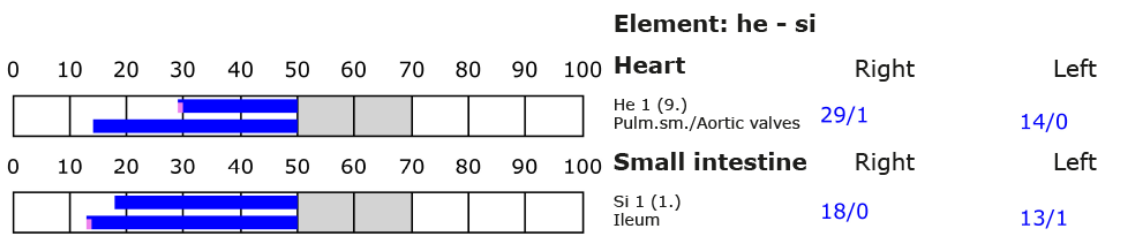
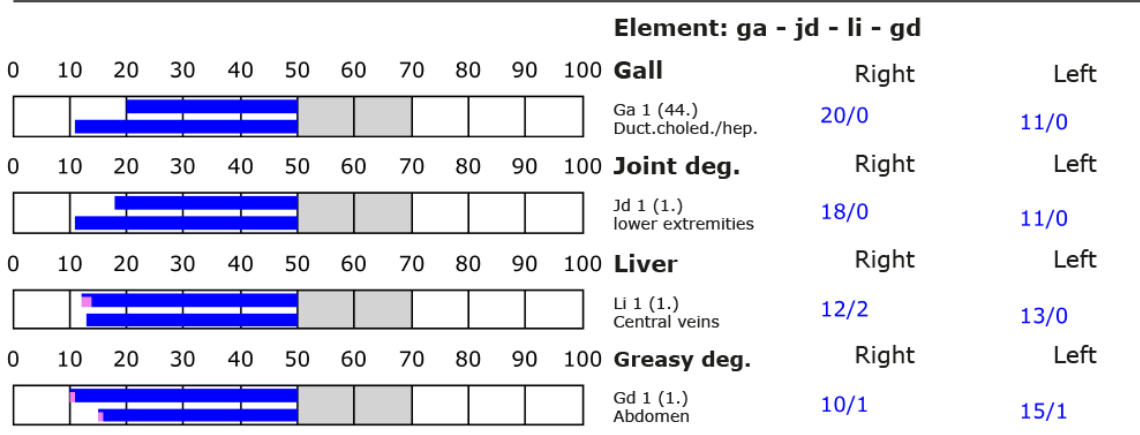
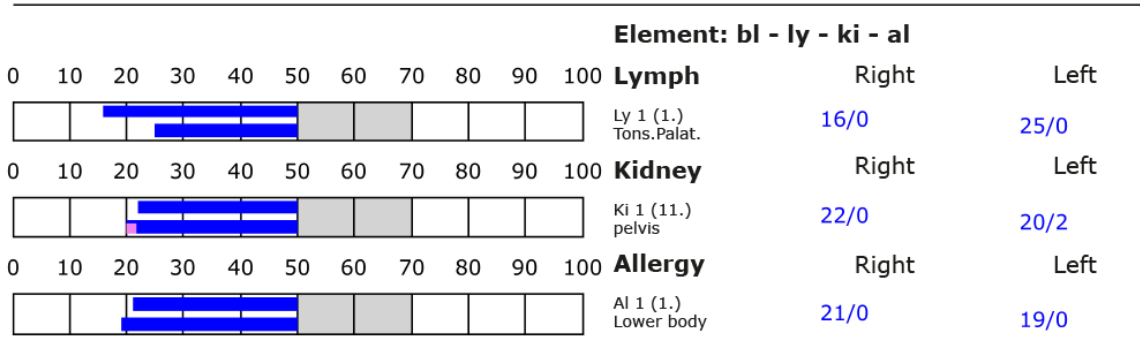


BESA basic test

+++ : Indicator decline > 15 Skt.
 ++ : Indicator decline 6-15 Skt.
 + : Indicator decline 3-5 Skt.

T: Total inflammation (>89 Skt.)
 P: Partial inflammation (70-89 Skt.)

D: Degeneration (< 50 Skt.) Standard values: (50-70 Skt.)



BESA 2 test BEFORE



BESA 2 Testing BEFORE the EMF on test person 1 in the electric vehicle while it is in motion.

Eva Schmidt performed a BESA basic test on subject 1, who was directly in the electric vehicle while driving. This BESA testing was performed approximately 10 minutes after the BESA 1 Basic testing. All BESA testing was performed at the TING points (40 nail fold points on the fingers and toes).

Goal: To determine the response of Subject 1's meridian system in confrontation with the strong EMF sources from the electric vehicle as a comparison to BESA Basic testing and as a comparison against subsequent BESA testing.

BESA test evaluation P76 1.1
from **21-02-2023 at 12:00 – 12:05** (5 minutes) pages 17 and 18

Result: The values measured in the electric vehicle indicated an increase in stress at the organs or organ systems measured via the meridian endpoints (acupuncture points) compared to the measured values of BESA 1. This subsequently allows stressful conclusions to be drawn about the subject's subordinate metabolic situation.

92 % in the blue area

07 % in the red area

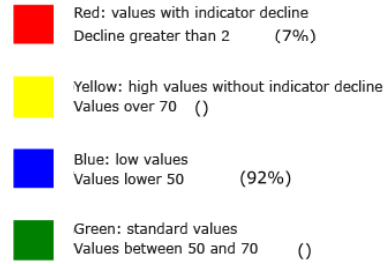
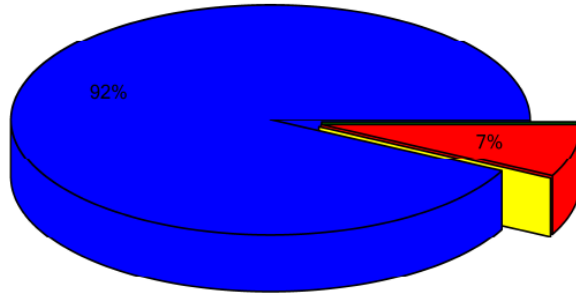
01 % in the yellow transition area

Conclusion: As the BESA graphs show, after about 5 minutes of driving in the electric vehicle, further measurement points meanwhile sank further into the degenerative blue range (energy deficiency). It is dramatic to see how, due to the EMF in the electric vehicle, all measured values or the entire energy-informative system slip into a partially severe energy deficiency within a few minutes. The red readings increased by another 2%. This means that the energy system of the organism would take severe damage to the test person in case of permanent influences of such or similar disturbance fields. For a balancing of these measured values or in other words: for a harmonization of the values the energy system needs a strong positive energy-informative impulse from the outside.

The comparisons of the BESA graphs confirm the stressing influences of the EMF on the test person.



Overview of BESA measuring



BESA basic test

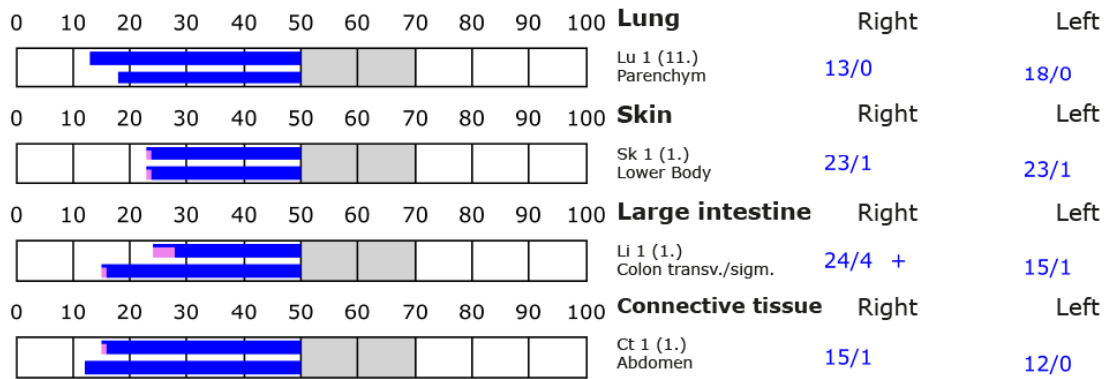
+++ : Indicator decline > 15 Skt.
 ++ : Indicator decline 6-15 Skt.
 + : Indicator decline 3-5 Skt.

T: Total inflammation (>89 Skt.)
 P: Partial inflammation (70-89 Skt.)

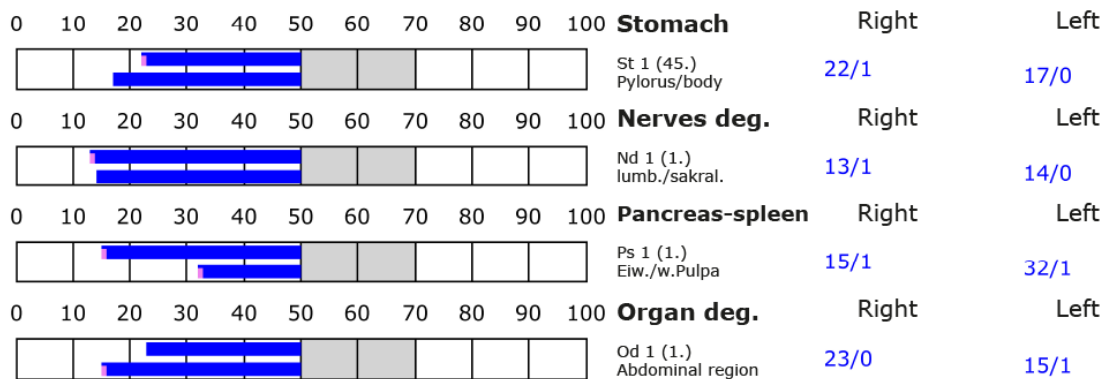
D: Degeneration (< 50 Skt.)

Standard values: (50-70 Skt.)

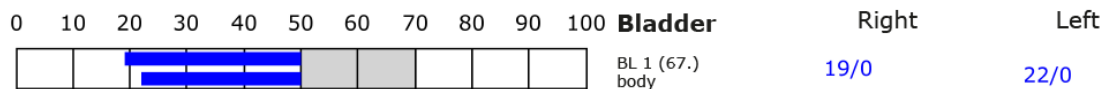
Element: lu - sk - li - ct



Element: st - nd - ps - od



Element: bl - ly - ki - al





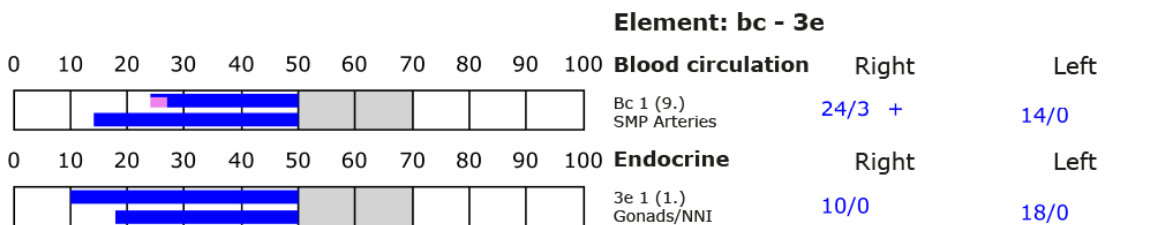
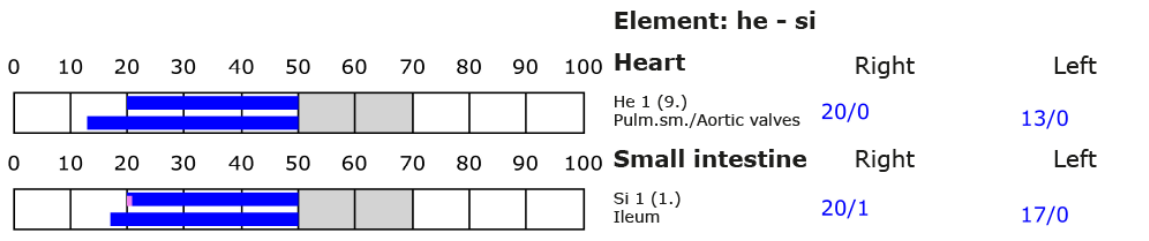
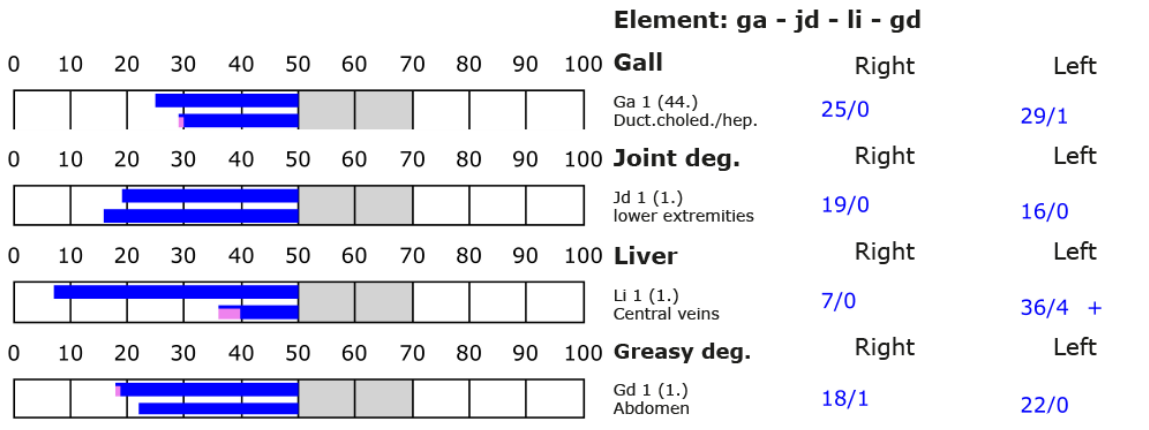
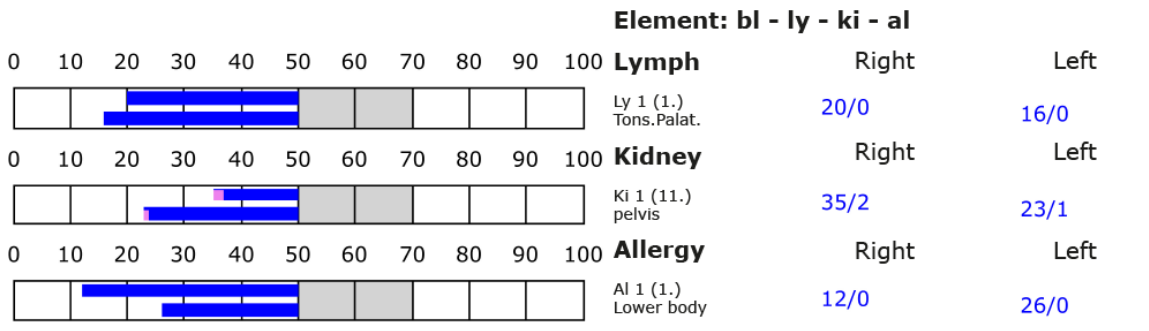
BESA basic test

+++ : Indicator decline > 15 Skt.
 ++ : Indicator decline 6-15 Skt.
 + : Indicator decline 3-5 Skt.

T: Total inflammation (>89 Skt.)
 P: Partial inflammation (70-89 Skt.)

D: Degeneration (< 50 Skt.)

Standard values: (50-70 Skt.)





BESA 3 test BEFORE

BESA 3 test BEFORE on test person 2 in the electric vehicle in motion, additionally during a telephone call.

Eva Schmidt performs a BESA test on subject 2. The test person is in the electric vehicle while driving, in addition to the previous BESA 2 testing, making a phone call with the smartphone. That is, in addition to BESA 2 testing, the subject was connected to a smartphone connected to the cellular network via his own cellular phone while driving in the electric vehicle. All BESA testing was performed at the TING points (40 nail fold points on the fingers and toes).

Goal: To determine the response of subject 2's meridian system within these strong EMF sources in the electric vehicle, which was further amplified by the phone call. To determine the differences compared to BESA 1 and BESA 2 testing BEFORE.

BESA test evaluation P76 1.1

from **21-02-2023 at 12:05 – 12:10** (5 minutes) page 20 and 21

Result: The measurement result indicated a further severe energy informative load increase at the meridian endpoints and in further consequence on the subordinate metabolic situation of the test person.

87 % in the blue area

12 % in the red area

01 % in the yellow transition area

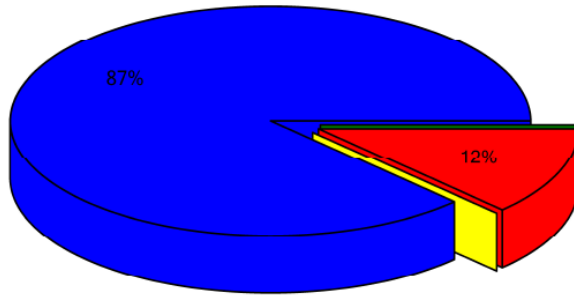
Conclusion: As the BESA graphs show, after about another minute of driving in the electric vehicle, all measurement points are now in a deep degenerative range (energy deficiency). However, the picture is dramatic due to the now further increased readings in the red area to 12%. The red readings again represent the total deregulation of these energy areas. This means that the energy system of the organism is under heavy pressure with permanent influences of such or similar interference fields and would increasingly burden the test person. The comparisons of the BESA graphs confirm the stressing influences of the EMF on the test person. For balancing these red measured values or, in other words:

For a harmonization of the values, the energy system needs a strong positive energy-informative impulse from outside again. This BESA test again illustrates in this subject the dramatic difference between EMF in the electric vehicle and EMF in the electric vehicle when phone calls are made at the same time.

The comparisons of the BESA graphs confirm the destructive change in the measured values or the stressful influences by the EMF on the subject.



Overview of BESA measuring



- Red: values with indicator decline
Decline greater than 2 (12%)
- Yellow: high values without indicator decline
Values over 70 ()
- Blue: low values
Values lower 50 (87%)
- Green: standard values
Values between 50 and 70 ()

BESA basic test

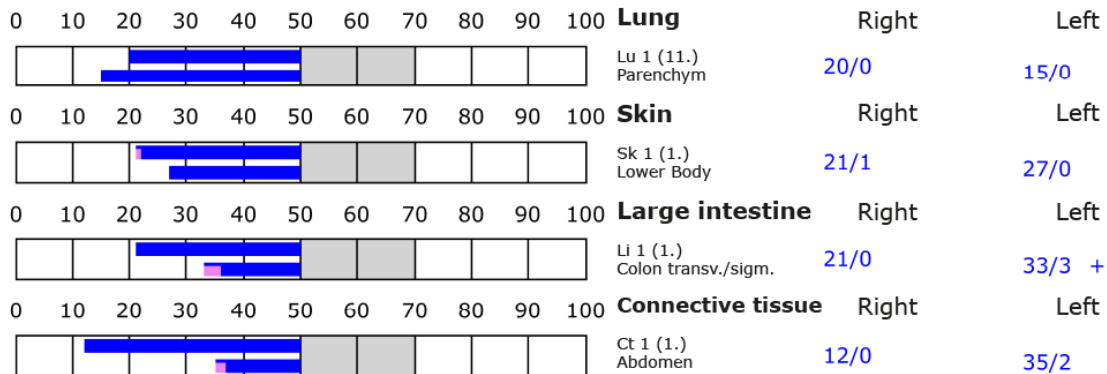
- +++ : Indicator decline > 15 Skt.
- ++ : Indicator decline 6-15 Skt.
- +: Indicator decline 3-5 Skt.

T: Total inflammation (>89 Skt.)
 P: Partial inflammation (70-89 Skt.)

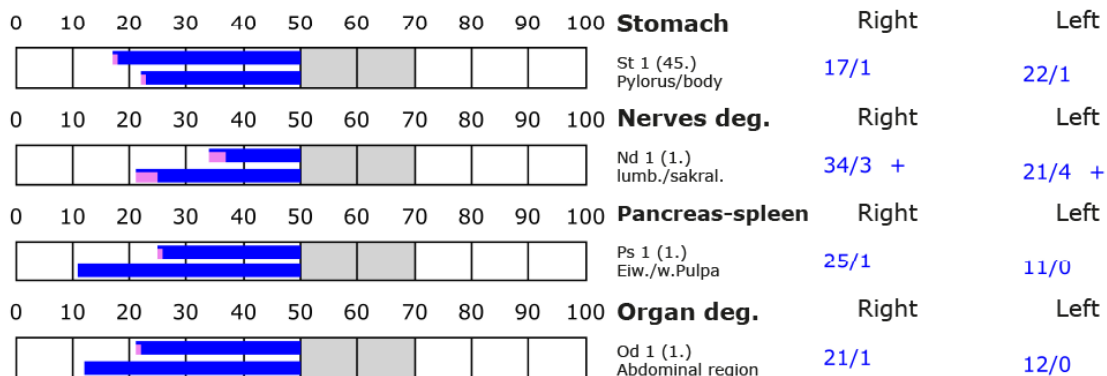
D: Degeneration (< 50 Skt.)

Standard values: (50-70 Skt.)

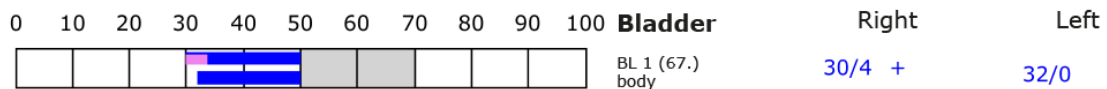
Element: lu - sk - li - ct



Element: st - nd - ps - od



Element: bl - ly - ki - al





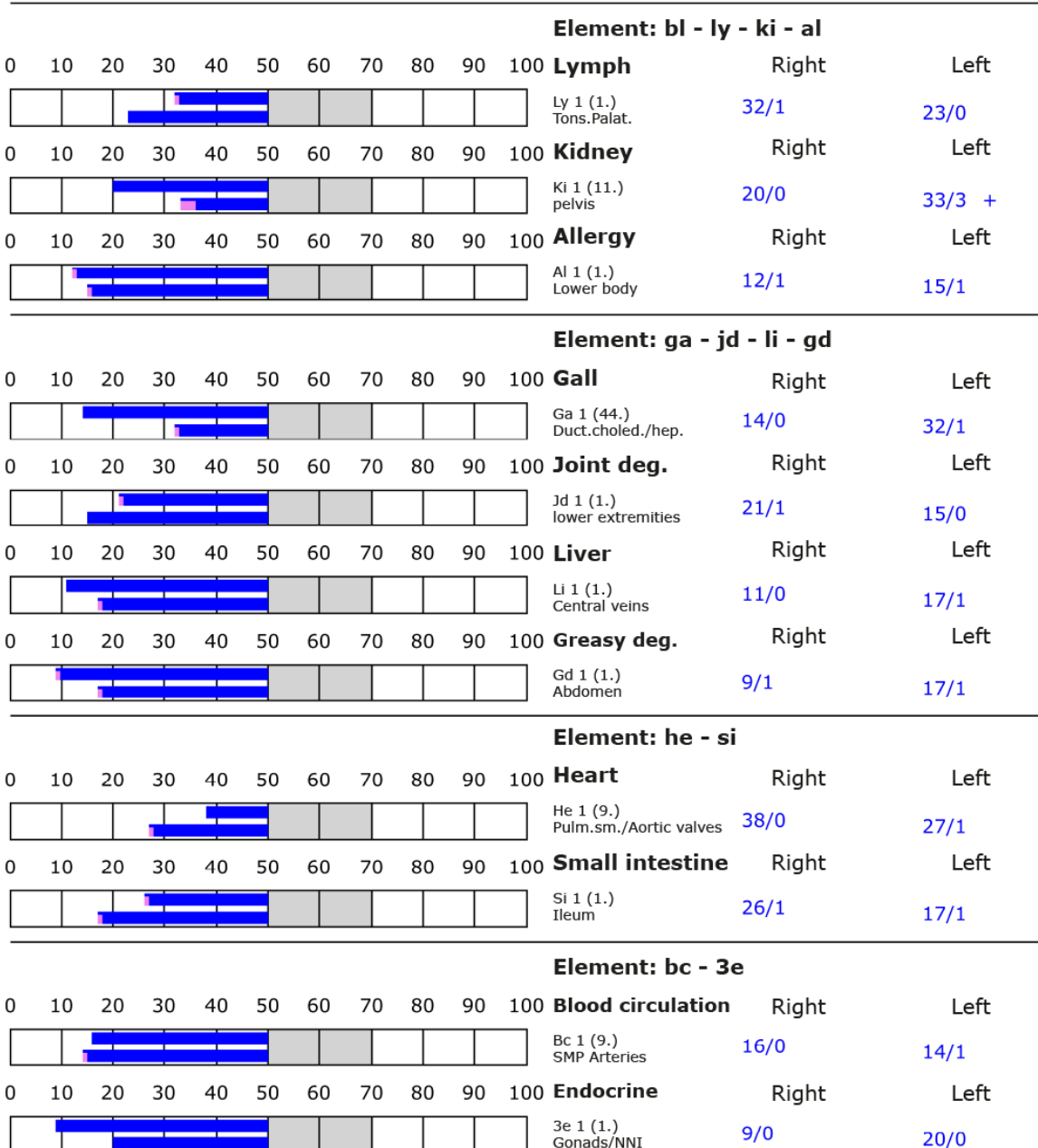
BESA basic test

+++ : Indicator decline > 15 Skt.
 ++ : Indicator decline 6-15 Skt.
 + : Indicator decline 3-5 Skt.

T: Total inflammation (>89 Skt.)
 P: Partial inflammation (70-89 Skt.)

D: Degeneration (< 50 Skt.)

Standard values: (50-70 Skt.)





BESA 4 test AFTER

BESA 4 testing AFTER of EMF on subject 2 according to the conditions from BESA 2 testing and with simultaneous confrontation with the Quantum Upgrade in the electric vehicle.

In the further course of the BESA test, all the EMF-carrying objects used in the BESA 2 tests BEFORE were activated again in the moving electric vehicle and tested together with the "Quantum Upgrade" on subject 2 of Eva Schmidt. The test object, the Quantum Upgrade, is located on the back seat of the electric vehicle while driving. Thus, the test object is in direct confrontation with the electric vehicle and the test person and thus in the measurement circuit.

Goal: To determine the reaction of the meridian system of the test subject when the EMF, together with the "Quantum Upgrade" act on the test subject. To determine the differences compared to the BESA 2 tests BEFORE?

BESA test evaluation P76 1.1

from **21-02-2023 at 12:11 – 12:16** (7 minutes) page 23 and 24

Result: The measurement result shows a significant improvement at the meridian endpoints or at the energetic state of the test person within a few minutes.

100 % in the green area

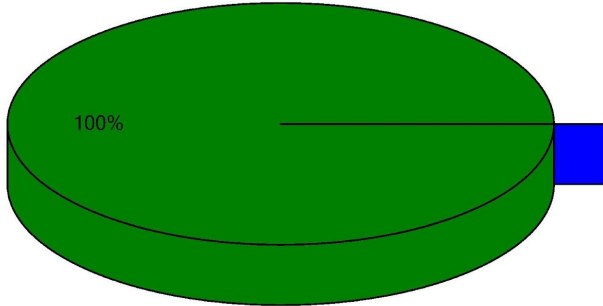
Conclusion: As the graphs show, after inserting the test object, the "Quantum Upgrade" into the measuring circuit, all measuring points are in the green, optimal, and harmonized range (balanced energy system). The BESA test results in a significant improvement of the energy situation in the meridian system of the test person compared to the previous BESA tests. It can be seen that the effect of the "Quantum Upgrade" is able to give the degenerative readings (total deregulation) detected in the BESA 2 tests the necessary impulse for harmonization (neutralization) into the life-promoting range.

The comparisons of the BESA graphs confirm the constructive changes and the resolution of the stresses and especially the red readings at the acupuncture points on the meridian system of the subject.

Even more, the results even show an improved picture compared to that of the BESA 1 Basic test.



Übersichtsdiagramm der BESA-Messungen:



- Rot: Werte mit Zeigerabfall
Zeigerabfall größer als 2 ()
- Gelb: Hohe Werte ohne Zeigerabfall
Werte über 70 ()
- Blau: Niedrige Werte
Werte kleiner als 50 ()
- Grün: Normalwerte
Werte zwischen 50 und 70 (100%)

Element: Lu - Ha - Di - BD				
0 10 20 30 40 50 60 70 80 90 100	Lunge	Rechts		Links
	Lu 1 (11.) Parenchym	53/1		54/1
0 10 20 30 40 50 60 70 80 90 100	Haut	Rechts		Links
	Ha 1 (1.) Unterkörper	56/0		52/1
0 10 20 30 40 50 60 70 80 90 100	Dickdarm	Rechts		Links
	Di 1 (1.) Colon transv./sigm.	52/1		55/0
0 10 20 30 40 50 60 70 80 90 100	Bindegewebsdeg.	Rechts		Links
	BD 1 (1.) Bauch	50/0		54/0
Element: Ma - ND - PM - OD				
0 10 20 30 40 50 60 70 80 90 100	Magen	Rechts		Links
	Ma 1 (45.) Pylorus/Körper	54/1		51/1
0 10 20 30 40 50 60 70 80 90 100	Nervendeg.	Rechts		Links
	ND 1 (1.) Lumb./Sakral.	50/0		59/1
0 10 20 30 40 50 60 70 80 90 100	Pankreas-Milz	Rechts		Links
	PM 1 (1.) Eiw./w.Pulpa	60/1		50/0
0 10 20 30 40 50 60 70 80 90 100	Organdeg.	Rechts		Links
	OD 1 (1.) Bauchr./Becken	57/1		53/0
Element: Bl - Ly - Ni - AI				
0 10 20 30 40 50 60 70 80 90 100	Blase	Rechts		Links
	Bl 1 (67.) Körper	54/1		55/0



EAV-Basismessung:

+++ : Zeigerabfall > 15 Skt. T: Totale Entzündung (89 Skt.) D: Degeneration (< 50 Skt.) Normalwerte: (50-70 Skt.)
 ++ : Zeigerabfall 6-15 Skt. P: Partielle Entzündung (70-89 Skt.)
 + : Zeigerabfall 3-5 Skt.

Element: Bl - Ly - Ni - Al			
0 10 20 30 40 50 60 70 80 90 100		Lymphhe	Rechts Links
	Ly 1 (1.) Tons.Palat.	51/0	52/0
0 10 20 30 40 50 60 70 80 90 100		Niere	Rechts Links
	Ni 1 (1.) Becken	51/1	56/0
0 10 20 30 40 50 60 70 80 90 100		Allergie	Rechts Links
	Al 1 (1.) unt.Körperab.	53/1	51/1
Element: Gbl - GD - Le - fD			
0 10 20 30 40 50 60 70 80 90 100		Gallenblase	Rechts Links
	Gbl 1 (44.) Duct.choled./hep.	50/0	53/1
0 10 20 30 40 50 60 70 80 90 100		Gelenkdeg.	Rechts Links
	GD 1 (1.) unt.Extrem.	57/1	51/1
0 10 20 30 40 50 60 70 80 90 100		Leber	Rechts Links
	Le 1 (1.) Zentralvenen	55/1	55/0
0 10 20 30 40 50 60 70 80 90 100		fettige Deg.	Rechts Links
	fD 1 (1.) Bauchraum	51/1	52/0
Element: He - Dü			
0 10 20 30 40 50 60 70 80 90 100		Herz	Rechts Links
	He 1 (9.) Pulm.kl./Aortenkl.	53/0	51/0
0 10 20 30 40 50 60 70 80 90 100		Dünndarm	Rechts Links
	Dü 1 (1.) Ileum	54/1	54/0
Element: Kr - 3E			
0 10 20 30 40 50 60 70 80 90 100		Kreislauf	Rechts Links
	Kr 1 (9.) SMP Arterien	52/1	59/1
0 10 20 30 40 50 60 70 80 90 100		Endokrinum	Rechts Links
	3E 1 (1.) Keimdr./NNI	51/1	51/1



BESA 5 test AFTER

BESA 5 testing AFTER of EMF on subject 1 - according to the requirements of BESA 3 testing and with simultaneous confrontation with the Quantum Upgrade in the electric vehicle.

In the further course of the BESA test, all the EMF-carrying objects used in BESA 3 testing BEFORE, including the telephone call, were activated again in the electric vehicle and tested together with the "Quantum Upgrade" on subject 1 in Eva Schmidt's moving electric vehicle. The Quantum Upgrade is again located on the back seat of the electric vehicle while driving. Thus, the test object is again in direct confrontation with the electric vehicle and the test person and thus in the measurement circuit.

Goal: To determine the reaction of the meridian system of the test person when the EMFs act on the test person together with the "Quantum Upgrade" according to the requirements of the BESA 3 test. Determination of the differences compared to the BESA 3 tests BEFORE and the BESA 4 tests AFTER?

BESA test evaluation P76 1.1

from **21-02-2023 at 12:17 – 12:22** (5 minutes) page 26 and 27

Result: The measurement result shows within a few minutes a similar significant improvement at the meridian endpoints or at the energetic state of the test person as in the BESA 4 test AFTER.

100 % in the green area

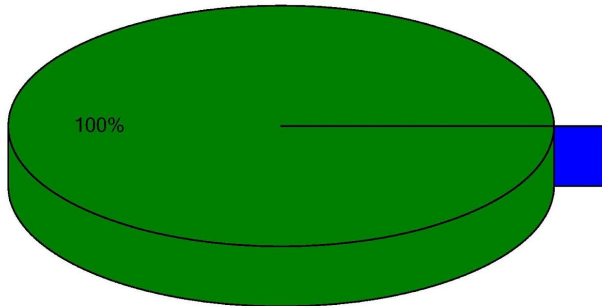
Conclusion: As the graphs show, also here after inserting the test object, the "Quantum Upgrade" into the measuring circuit, all measuring points are in the green, optimal, and harmonized range (balanced energy system). The BESA test results in a significant improvement of the energy situation in the meridian system of the test person compared to the previous BESA 3 tests. It is shown that the effect of the "Quantum Upgrade" is also able to give the degenerative or red readings (total deregulation) detected in the BESA 2 and especially BESA 3 tests the necessary impulse for harmonization (neutralization) into the life-promoting range. The test object was also able to compensate for the additional stress caused by the telephone call in an energy-informative way.

The comparisons of the BESA graphs confirm the changes and the resolution of the stressed and especially the red acupuncture points on the meridian system of the test subject.

Even more, the results show an improved picture compared to the BESA 1 Basic test.



Übersichtsdiagramm der BESA-Messungen:



- Rot: Werte mit Zeigerabfall
Zeigerabfall größer als 2 ()
- Gelb: Hohe Werte ohne Zeigerabfall
Werte über 70 ()
- Blau: Niedrige Werte
Werte kleiner als 50 ()
- Grün: Normalwerte
Werte zwischen 50 und 70 (100%)

Element: Lu - Ha - Di - BD			
0 10 20 30 40 50 60 70 80 90 100		Lunge	Rechts Links
	Lu 1 (11.) Parenchym	50/0	51/1
0 10 20 30 40 50 60 70 80 90 100		Haut	Rechts Links
	Ha 1 (1.) Unterkörper	53/1	51/0
0 10 20 30 40 50 60 70 80 90 100		Dickdarm	Rechts Links
	Di 1 (1.) Colon transv./sigm.	53/0	52/0
0 10 20 30 40 50 60 70 80 90 100		Bindegewebsdeg.	Rechts Links
	BD 1 (1.) Bauch	51/0	52/1
Element: Ma - ND - PM - OD			
0 10 20 30 40 50 60 70 80 90 100		Magen	Rechts Links
	Ma 1 (45.) Pylorus/Körper	52/1	51/1
0 10 20 30 40 50 60 70 80 90 100		Nervendeg.	Rechts Links
	ND 1 (1.) Lumb./Sakral.	50/0	50/0
0 10 20 30 40 50 60 70 80 90 100		Pankreas-Milz	Rechts Links
	PM 1 (1.) Eiw./w.Pulpa	52/2	52/1
0 10 20 30 40 50 60 70 80 90 100		Organdeg.	Rechts Links
	OD 1 (1.) Bauchr./Becken	52/1	51/0
Element: Bl - Ly - Ni - Al			
0 10 20 30 40 50 60 70 80 90 100		Blase	Rechts Links
	Bl 1 (67.) Körper	55/0	55/1



EAV-Basismessung:

+++ : Zeigerabfall > 15 Skt. T: Totale Entzündung (89 Skt.) D: Degeneration (< 50 Skt.) Normalwerte: (50-70 Skt.)
 ++ : Zeigerabfall 6-15 Skt. P: Partielle Entzündung (70-89 Skt.)
 + : Zeigerabfall 3-5 Skt.

Element: BI - Ly - Ni - AI	
0 10 20 30 40 50 60 70 80 90 100	Lymphhe Rechts Links
	Ly 1 (1.) 56/2 53/0 Tons.Palat.
0 10 20 30 40 50 60 70 80 90 100	Niere Rechts Links
	Ni 1 (1.) 55/1 55/1 Becken
0 10 20 30 40 50 60 70 80 90 100	Allergie Rechts Links
	AI 1 (1.) 52/0 53/0 unt.Körperab.
Element: Gbl - GD - Le - fD	
0 10 20 30 40 50 60 70 80 90 100	Gallenblase Rechts Links
	Gbl 1 (44.) 50/0 51/1 Duct.choled./hep.
0 10 20 30 40 50 60 70 80 90 100	Gelenkdeg. Rechts Links
	GD 1 (1.) 51/1 50/0 unt.Extrem.
0 10 20 30 40 50 60 70 80 90 100	Leber Rechts Links
	Le 1 (1.) 51/0 51/1 Zentralvenen
0 10 20 30 40 50 60 70 80 90 100	fettige Deg. Rechts Links
	fD 1 (1.) 51/0 50/0 Bauchraum
Element: He - Dü	
0 10 20 30 40 50 60 70 80 90 100	Herz Rechts Links
	He 1 (9.) 54/0 51/0 Pulm.kl./Aortenkl.
0 10 20 30 40 50 60 70 80 90 100	Dünndarm Rechts Links
	Dü 1 (1.) 56/1 51/1 Ileum
Element: Kr - 3E	
0 10 20 30 40 50 60 70 80 90 100	Kreislauf Rechts Links
	Kr 1 (9.) 52/1 55/0 SMP Arterien
0 10 20 30 40 50 60 70 80 90 100	Endokrinum Rechts Links
	3E 1 (1.) 51/0 51/1 Keimdr./NNI

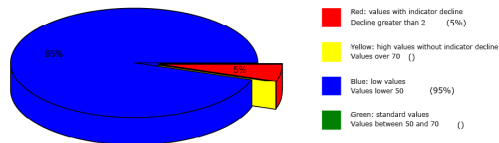


Comparison of all BESA tests BEFORE and AFTER

Proband 2

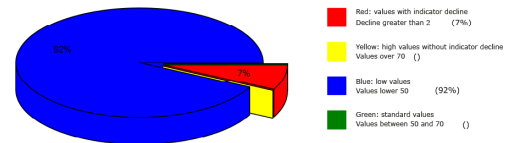
BESA 1 Basic test BEFORE as status

Overview of BESA measuring



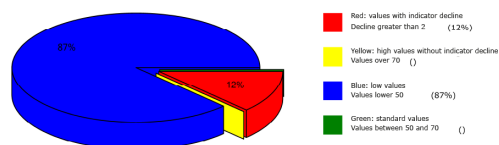
BESA 2 test BEFORE EMF in the electric vehicle

Overview of BESA measuring



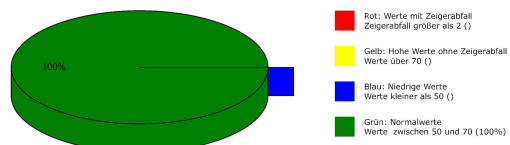
BESA 3 test BEFORE EMF in the electric vehicle and phone call

Overview of BESA measuring



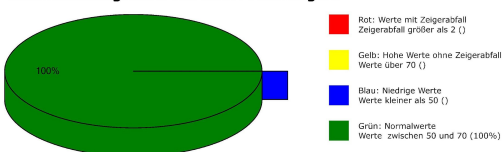
BESA 4 test AFTER EMF in the electric vehicle with testobject Quantum Upgrade

Übersichtsdiagramm der BESA-Messungen:



BESA 5 test AFTER EMF in the electric vehicle and phone call with testobject Quantum Upgrade

Übersichtsdiagramm der BESA-Messungen:



The representation of the pie charts shows, on the one hand, the development of the loads on the test person with an increasing increase of the EMF in the electric vehicle and on the other hand how these could be harmonized by the test object, the Quantum Upgrade.



General information about the test result

Man represents a kind of receiving antenna for environmental information. This is because human life depends fundamentally and exclusively on environmental information. Our organism is biologically very sensitive to where natural information (fields) are located or where this natural information is subject to interactions and fluctuations. **For this reason, detected informative electromagnetic interference fields are biologically highly relevant. Any reduction or transformation of these interfering fields (ideally to 100 percent) is biologically very important, often even vital.** These informational disturbances from our environment are only compatible with life if they can be readjusted to a natural fluctuation tolerance. Disturbances, problems, blockades, and disharmonies in the biological control circuit of man find their causes in such disturbing electromagnetic information influences.

Neutralizing or harmonizing effects could be proven in this detailed project P76 1.1 to determine the effect of the "Quantum Upgrade". The "Quantum Upgrade" was able to neutralize the biologically detrimental effects and effects of electromagnetic interference fields in a mid-range electric vehicle that were observed in the test persons.

The significant ability of the "Quantum Upgrade" to neutralize and harmonize the electromagnetic interference fields or stress factors in the electric vehicle tested in this detailed project P76 1.1, as well as their transformation into biological life-promoting goodness, is proven by this project.

Authorized Summary

The BESA tests carried out by IFVBESA on the energetic and physical effectiveness of the "Quantum Upgrade" have clearly shown that it is able to neutralize or harmonize biologically significant stress factors from EMF such as WLAN, Bluetooth, 3G, two connected smartphones of the generations 4G and 5G as well as transmission masts in the meridians or at the acupuncture points of the test persons. Via the bioenergy-informative system analysis, the effect of the above-mentioned stress factors on the test persons, their meridian systems and their energetic-biological control circuits was questioned and systemically tested on the energy-informative level. The BESA tests BEFORE - AFTER show significant changes at the tested acupuncture points at the meridian system of the test persons. The measurement data as well as their key figures impressively confirm on the one hand the stress caused by the tested fields to the

On the other hand, they show how the deregulating energies are transformed into biocompatible energies immanent to the body after the application of the "Quantum Upgrade".



From a holistic point of view, it may be assumed that the positive effect on the test persons also occurs in other people. That the positive influence of the "Quantum Upgrade" is actually possible with high precision is clearly shown by this test through the BESA BEFORE-AFTER comparisons. All measured values improved significantly from the mostly 100-percent blue or red measuring range into the green mostly 50-second range (scale value), i.e. the range of optimal measured values.

This means: an optimal regulation dynamic has taken place. Here, in the sense of the IFVBESA, one can clearly speak of an optimal, significant improvement of the body's own energy situation.

Result: The test persons were brought into contact with heavy EMF during the BESA-NACHHER tests. In contrast to the BEFORE tests, in which the "Quantum Upgrade" was not used, consistently positive measurement results were found, indicating that neutralization or harmonization had taken place. The regulation dynamics developed into an optimal effective range.

By proving the energetic effectiveness of the "Quantum Upgrade" in this detailed project P76 1.1, the requirements for obtaining a BESA seal of approval in the field of EMF by the International Professional Association for BESA were fulfilled.